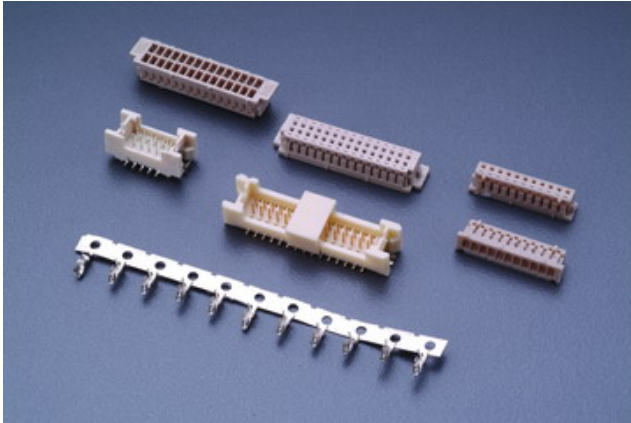


H13H SERIES

.049" (1.25mm) PITH WIRE TO BOARD CONNECTORS



Specifications

Current rating: 1A AC,DC

Voltage rating: 150V AC,DC

Temperature range: -25°C to +85°C

(including temperature rise)

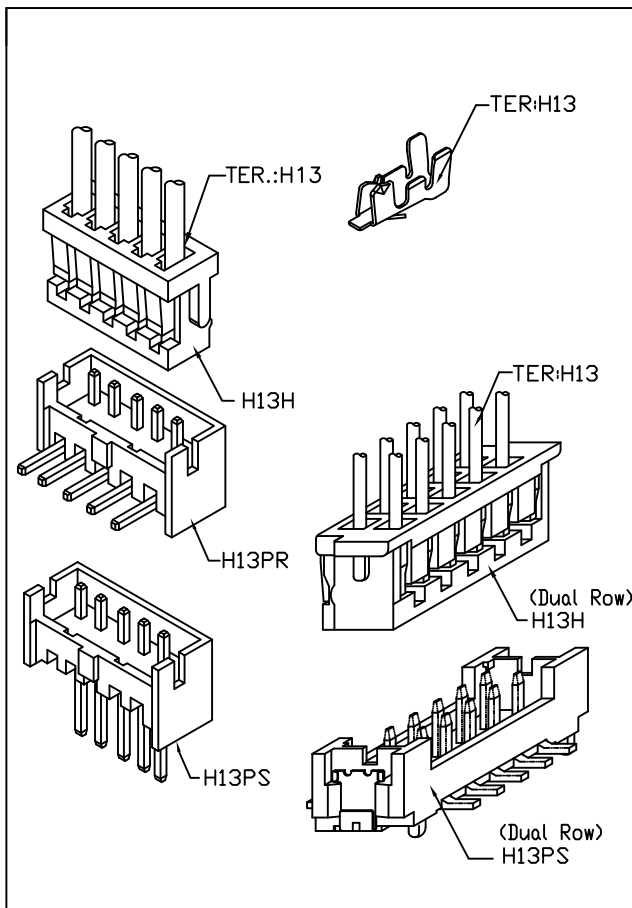
Contact resistance: Initial value/10mΩ Max.

After environmental testing/20mΩ Max.

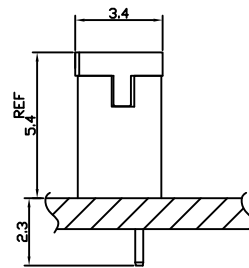
Insulation resistance: 500MΩ MIN.

Withstanding voltage: 500V AC/minute

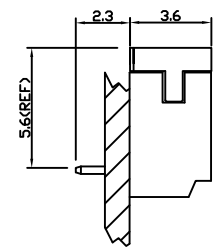
Applicable wire: AWG#26-30(H13)



Assembly layout

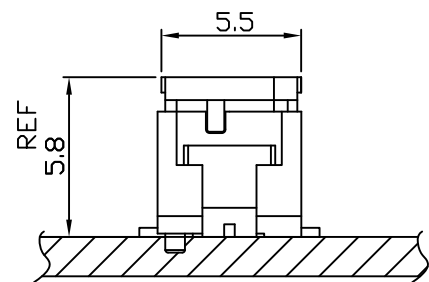


SMT SYPE



SMT SYPE

H13



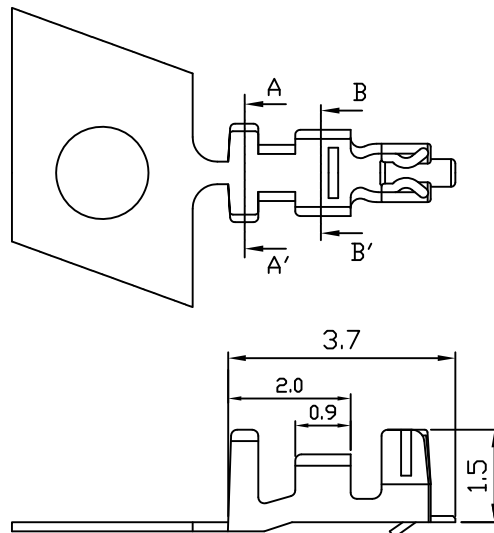
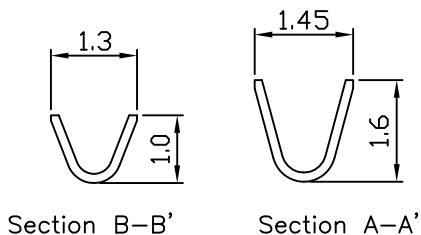
SMT SYPE

H13 .049" (1.25mm) PITCH TERMINAL

Features:

unit:mm

- * THICKNESS: 0.15mm
- * MATES WITH: H13H SERIES HOUSING
- * ACCEPTS WITH: H13PR H13PS SERIES WAFER



PART NO.	WIRE RANGE	INSULATION O.D.	MATERIAL	FINISH	QTY/REEL
H13	AWG#26-30	ø0.65~ø1.0mm	Brass	Tin-plated	10,000
H13-P	AWG#26-30	ø0.65~ø1.0mm	Phosphor Bronze	Tin-plated	10,000

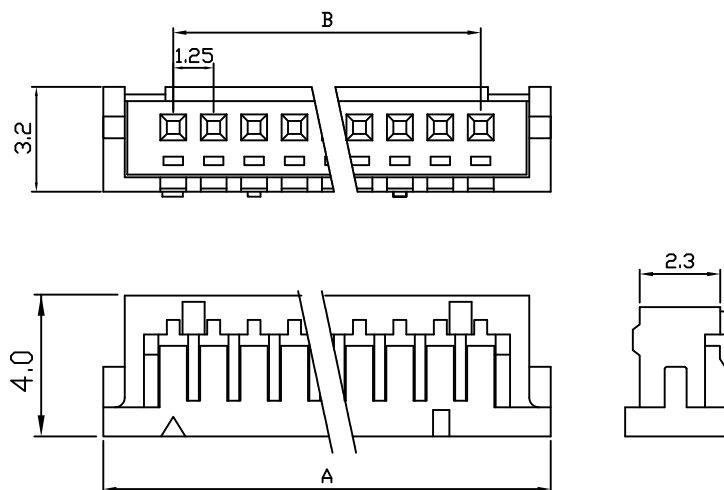
H13H .049" (1.25mm) PITCH HOUSING

Features:

unit:mm

- * MAT'L: NYLON 66 UL94V-0
- * MATES WITH: H13 SERIES TERMINAL
- * ACCEPTS WITH: H13PR H13PS SERIES WAFER

PART NO.	A	B
H13H-02	3.05	1.25
H13H-03	4.30	2.50
H13H-04	5.55	3.75
H13H-05	6.80	5.00
H13H-06	8.05	6.25
H13H-07	9.30	7.50
H13H-08	10.55	8.75
H13H-09	11.80	10.00
H13H-10	13.05	11.25
H13H-11	14.30	12.50
H13H-12	15.55	13.75
H13H-13	16.80	15.00
H13H-14	18.05	16.25
H13H-15	19.50	17.50



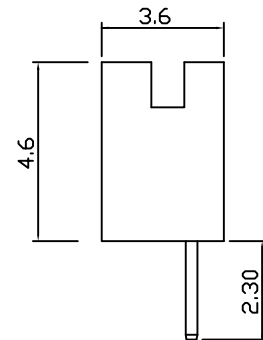
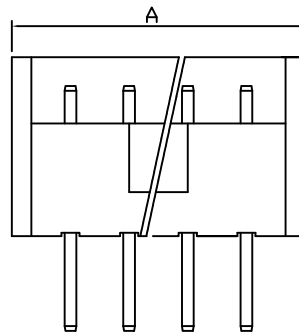
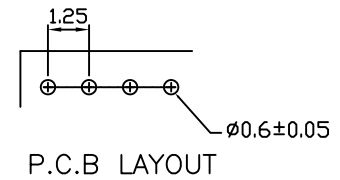
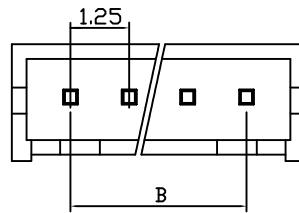
H13PS .049" (1.25mm) PITCH Headers—Straight

Features:

unit:mm

- * MAT'L: NYLON 66 UL94V-0
- * ACCEPTS WITH: H13H SERIES HOUSING
- * MATES WITH: H13 SERIES TERMINAL

PART NO.	A	B
H13PS-02	3.75	1.25
H13PS-03	5.00	2.50
H13PS-04	6.25	3.75
H13PS-05	7.50	5.00
H13PS-06	8.75	6.25
H13PS-07	10.0	7.50
H13PS-08	11.25	10.00
H13PS-09	12.50	11.25
H13PS-10	13.75	12.50
H13PS-11	15.00	13.75
H13PS-12	16.25	15.00
H13PS-13	17.50	16.25
H13PS-14	18.75	17.50
H13PS-15	20.00	17.50



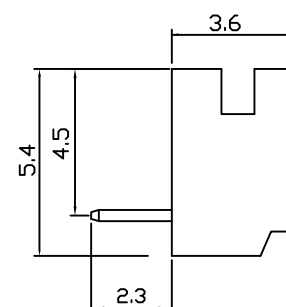
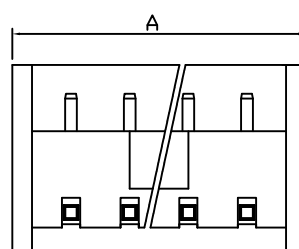
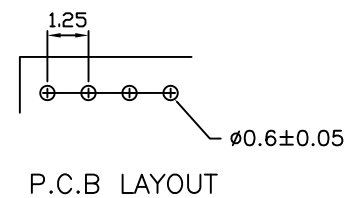
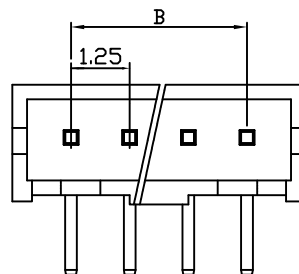
H13PR .049" (1.25mm) PITCH Headers—Right Angle

Features:

unit:mm

- * MAT'L: NYLON 66 UL94V-0
- * MATES WITH: H13H SERIES HOUSING
- * ACCEPTS WITH: H13 SERIES TERMINAL

PART NO.	A	B
H13PR-02	3.75	1.25
H13PR-03	5.00	2.50
H13PR-04	6.25	3.75
H13PR-05	7.50	5.00
H13PR-06	8.75	6.25
H13PR-07	10.0	7.50
H13PR-08	11.25	10.00
H13PR-09	12.50	11.25
H13PR-10	13.75	12.50
H13PR-11	15.00	13.75
H13PR-12	16.25	15.00
H13PR-13	17.50	16.25
H13PR-14	18.75	17.50
H13PR-15	20.00	17.50

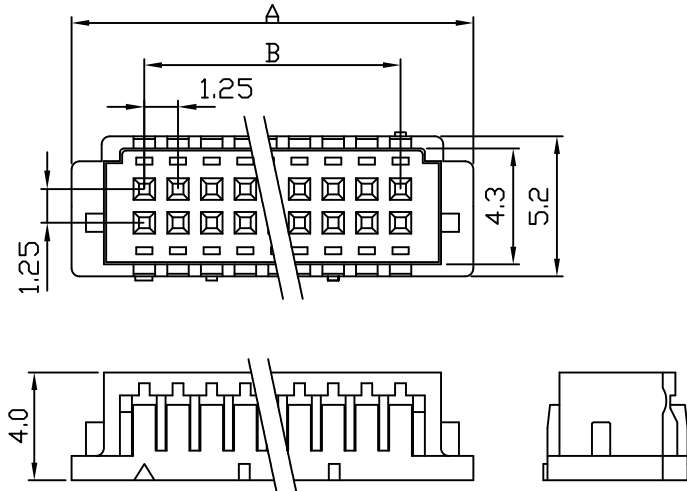


H13H (Dual Row) .049" (1.25mm) PITCH HOUSING

Features:

- * MAT'L: NYLON 66 UL94V-0
- * MATES WITH: H13 SERIES TERMINAL
- * ACCEPTS WITH: H13PS (Dual Row) SERIES WAFER

PART NO.	A	B
H13H-(2X5) 10	10.40	5.00
H13H-(2X10) 20	16.65	11.25
H13H-(2X15) 30	22.90	17.50
H13H-(2X20) 40	29.15	23.75

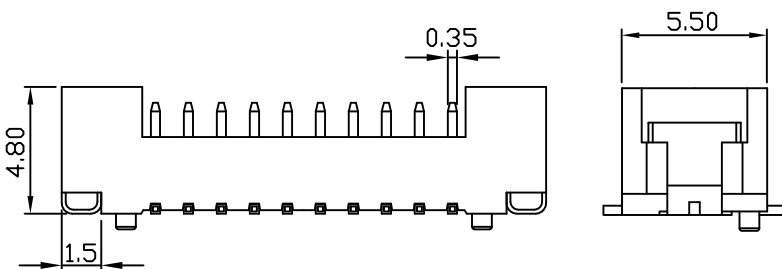
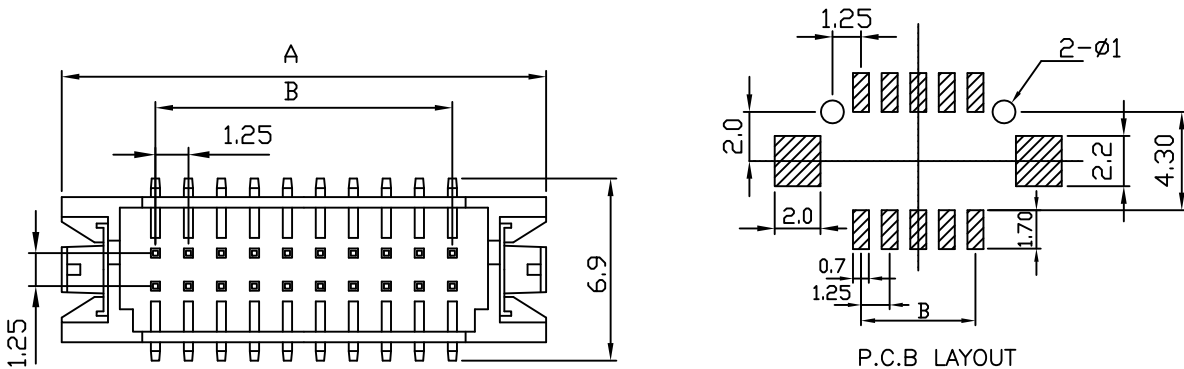


H13PS (Dual Row) .049" (1.25mm) PITCH Headers—Straight

unit:mm

Features:

- * MAT'L: NYLON 66 UL94V-0
- * MATES WITH: H13H SERIES HOUSING
- * ACCEPTS WITH: H13 SERIES TERMINAL



PART NO.	A	B
H13PS- 10	12.10	5.00
H13PS- 20	18.35	11.25
H13PS- 30	24.60	17.50
H13PS- 40	30.85	23.75