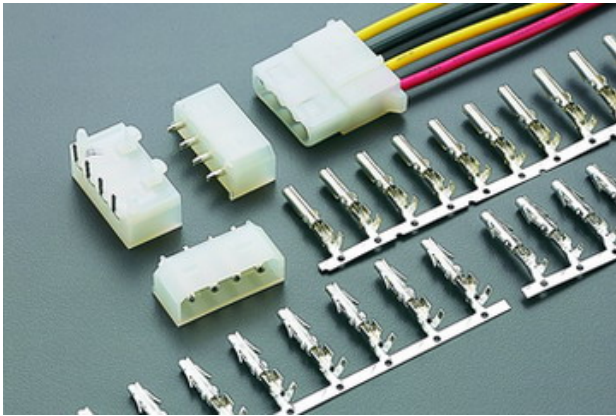


8620-04 SERIES

.200" (5.08mm) PITCH WIRE TO BOARD CONNECTOR



Specifications

Current rating: 5A AC, DC

Voltage rating: 250V AC, DC

Temperature range: -25°C to +85°C
(including temperature rise)

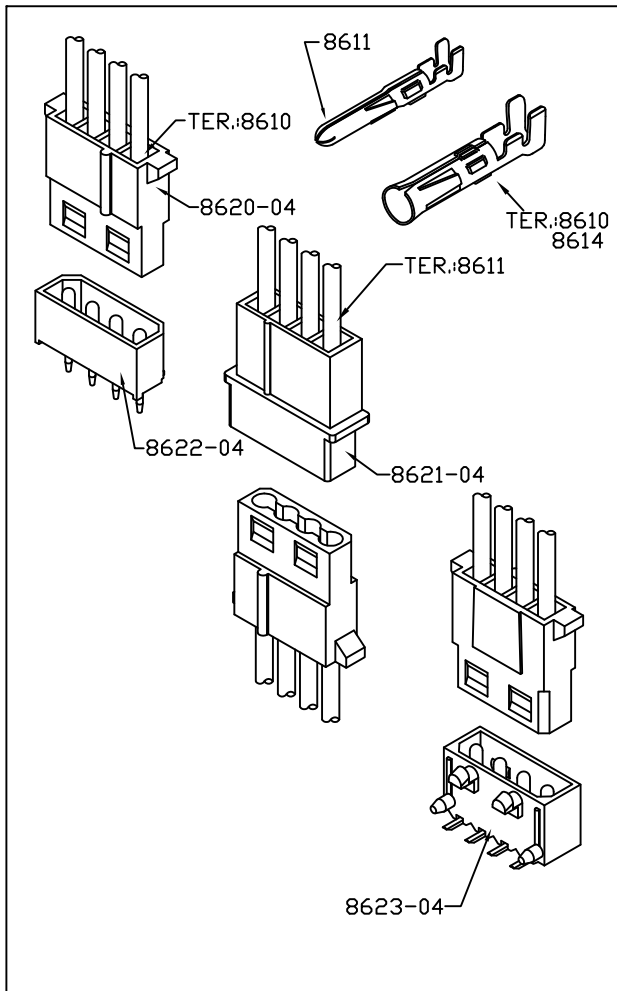
Contact resistance: Initial value/10mΩ Max.

After environmental testing/20mΩ Max.

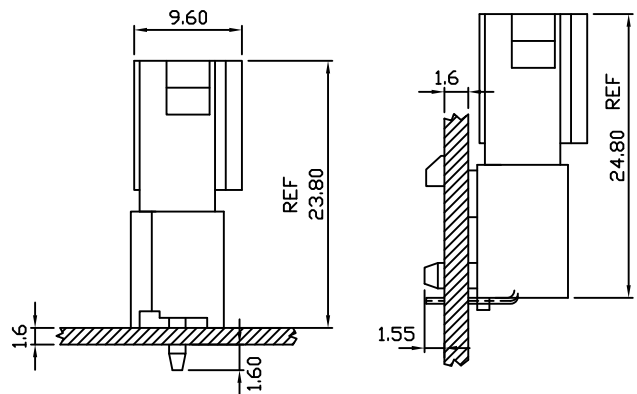
Insulation resistance: 500MΩ MIN.

Withstanding voltage: 1000V AC/minute

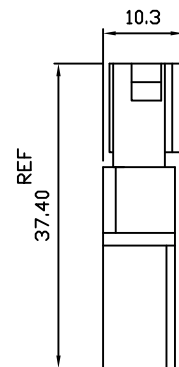
Applicable wire: AWG#18-22



Assembly layout



WIRE TO BOARD TYPE



WIRE TO WIRE TYPE

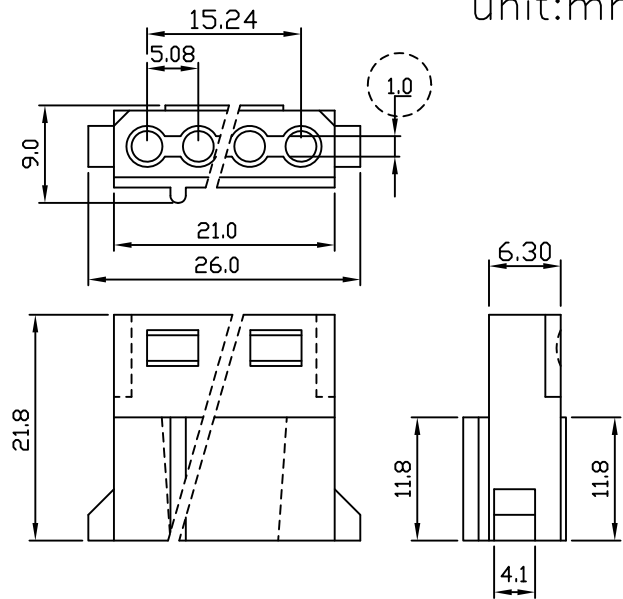
8620-04 .200" (5.08mm) PITCH CRIMP HOUSING

Features:

- * MAT'L: NYLON 94V-2
- * MATES WITH: 8610 TERMINAL
- * ACCEPTS WITH: 8622-04 8623-04 WAFER
- * ACCEPTS WITH: 8621-04 SERIES HOUSING

unit:mm

PART NO.	A	B
8620-02	13.7	5.08
8620-04	21.1	15.24

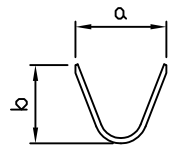


8610 8614 .200" (5.08mm) PITCH CRIMP TERMINAL

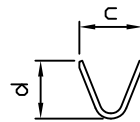
Features:

- * THICKNESS: 0.25mm
- * MATES WITH: 8620-04 SERIES HOUSING
- * ACCEPT WITH: 8611 TERMINAL & 8621-04 SERIES HOUSING
- * 8610:T:0.25T 0.30T

unit:mm



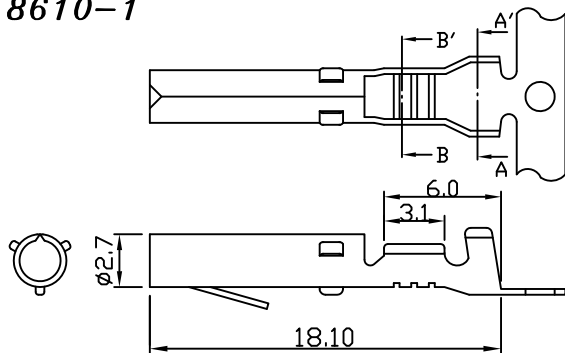
Section A-A'



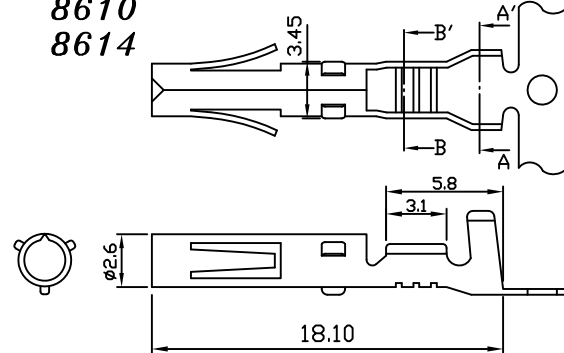
Section B-B'

	a	b	c	d
8610-1	4.10	3.60	2.70	2.40
8610	4.10	3.30	2.70	2.40
8614	4.80	4.30	3.10	3.40

8610-1



**8610
8614**



PART NO.	WIRE RANGE	INSULATION O.D.	MATERIAL	FINISH	QTY/REEL
8610	AWG#18-#22	φ2.8~φ1.5mm	BRASS/ PHOSPHOR BRONZE	Tin-plated	8,000
8614	AWG#16-#18	φ4.2~φ2.8mm	BRASS/ PHOSPHOR BRONZE	Tin-plated	5,000

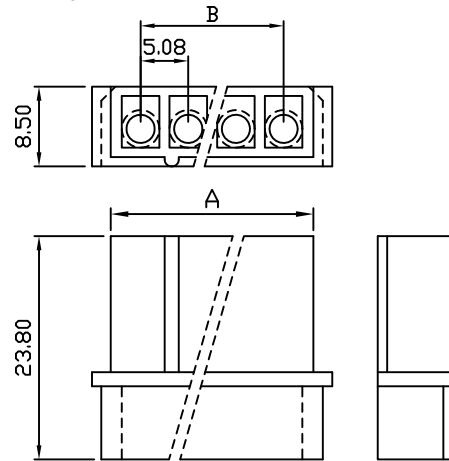
8621 .200" (5.08mm) PITCH CRIMP HOUSING

Features:

unit:mm

- * MAT'L: NYLON 94V-2
- * MATES WITH: 8611 8611L SERIES TERMINAL
- * ACCEPTS WITH: 8620 SERIES HOUSING

PART NO.	A	B
8621- 02	13.5	5.08
8621- 04	23.5	15.24



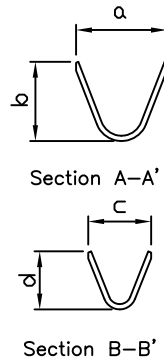
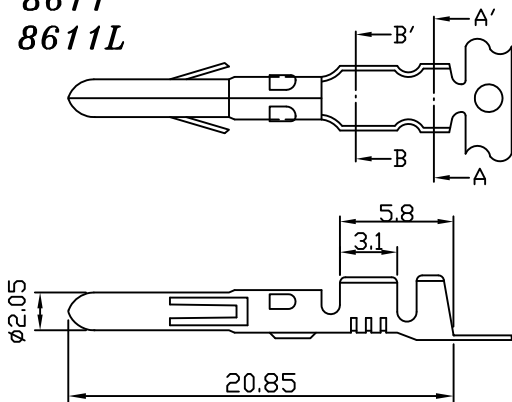
8611 .200" (5.08mm) PITCH CRIMP TERMINAL

Features:

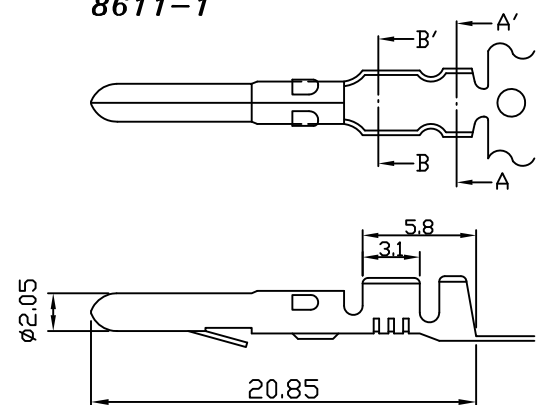
unit:mm

- * THICKNESS: 0.25mm
- * MATES WITH: 8621H-04 SERIES HOUSING
- * ACCEPT WITH: 8610 TERMINAL & 8620H-04 HOUSING

8611
8611L



8611-1



PART NO.	a	b	c	d
8611-1 8611	4.1	3.3	3.4	2.8
8611L	4.85	4.1	3.0	3.5

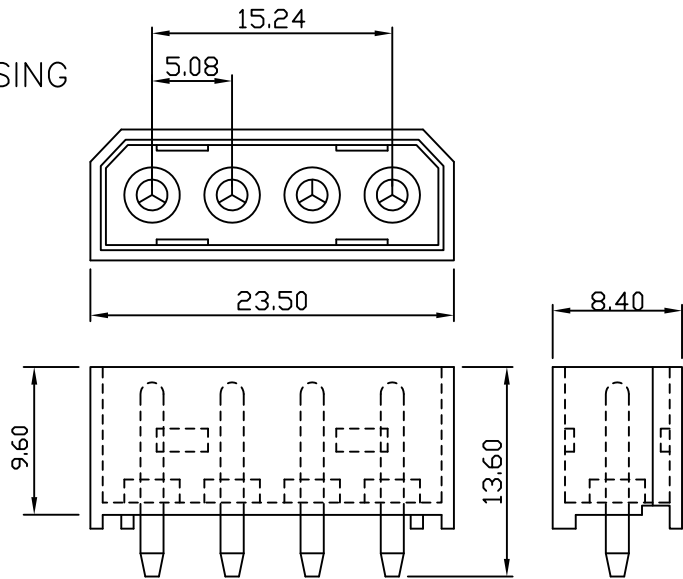
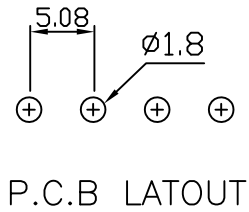
PART NO.	WIRE RANGE	INSULATION O.D.	MATERIAL	FINISH	QTY/REEL
8611-1	AWG#18-#22	$\phi 2.8 \sim \phi 1.5\text{mm}$	BRASS/ PHOSPHOR BRONZE	Tin-plated	8,000
8611	AWG#18-#22	$\phi 2.8 \sim \phi 1.5\text{mm}$	BRASS/ PHOSPHOR BRONZE	Tin-plated	8,000
8611L	AWG#14-#18	$\phi 4.2 \sim \phi 2.8\text{mm}$	BRASS/ PHOSPHOR BRONZE	Tin-plated	5,000

8622-04 .200" (5.08mm) PITCH Headers—Straight

Features:

- * BODY: NYLON 66 UL94V-2
- * PIN: BRASS TIN PLATED
- * MATES WITH 8620-04 HOUSING

unit:mm



8623-04 .200" (5.08mm) PITCH WAFER

Features:

- * BODY: NYLON 66 UL94V-2
- * PIN: BRASS TIN PLATED
- * MATES WITH 8620-04 HOUSING

unit:mm

Side entry type

