

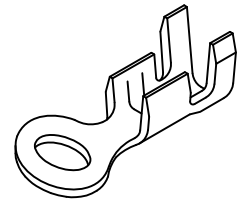
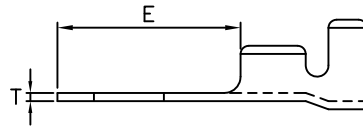
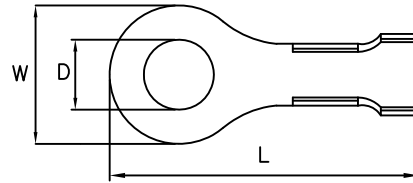
# RING TONGUE TERMINAL

unit:mm



## Specifications:

- \* RATED CURRENT RING: 5A AC.DC
- \* VOLTAGE RATING: 250V AC.DC

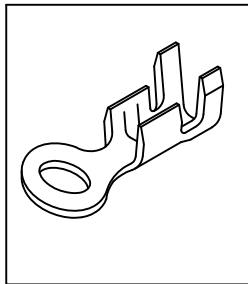


\* CSA FILE NO.:LR84767 W/R=WIRE RANGE

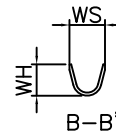
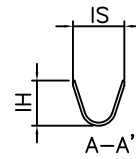
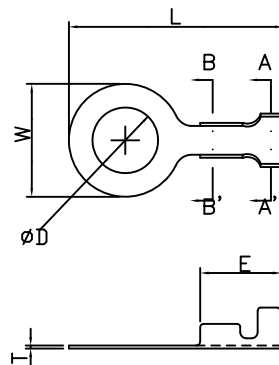
	PART/NO.	W	E	L	D	T	MT'L/FINISH	W/R	INS.O.D.
*	E431BS-2	7.0	8.3	16.0	3.2	0.5	BRASS/TIN	14-22	3.8-1.5
	E432BS-2	7.2	8.3	16.0	3.2	0.5	BRASS/TIN	14-22	3.8-1.5
*	E4311BS-2	7.0	8.3	16.0	3.7	0.5	BRASS/TIN	14-22	3.8-1.5
	E4312BS-2	7.0	8.3	16.0	3.2	0.4	BRASS/TIN	14-22	3.8-1.5
	E4313BS-2	7.0	8.3	16.0	3.7	0.4	BRASS/TIN	14-22	3.8-1.5
	E4314BS-2	7.0	8.3	16.0	-	0.5	BRASS/TIN	14-22	3.8-1.5
	E4315BS-2	7.0	8.3	16.0	4.3	0.4	BRASS/TIN	14-22	3.8-1.5
	E4316BS-2	7.0	8.3	16.0	4.3	0.5	BRASS/TIN	14-22	3.8-1.5
	E4321BS-2	7.2	8.3	16.0	3.2	0.4	BRASS/TIN	14-22	3.8-1.5
	E4322BS-2	7.2	8.3	16.0	-	0.4	BRASS/TIN	14-22	3.8-1.5
	E412BS-2	8.0	10.3	18.1	4.3	0.5	BRASS/TIN	14-18	3.6-2.9
*	E441BS-2	8.5	11.2	19.0	4.3	0.5	BRASS/TIN	14-22	3.8-1.5
	E456BS-2	8.5	11.2	19.0	5.4	0.5	BRASS/TIN	14-22	3.8-1.5
	E433BS-2	8.5	11.2	19.0	3.3	0.5	BRASS/TIN	14-22	3.8-1.5
	E4411BS-2	8.5	11.2	19.0	-	0.5	BRASS/TIN	14-22	3.8-1.5
*	E4451BS-2	8.5	11.2	19.0	4.3	0.4	BRASS/TIN	14-22	3.8-1.5
	E458BS-2	8.5	11.2	19.0	5.4	0.4	BRASS/TIN	14-22	3.8-1.5
	E4331BS-2	8.5	11.2	19.0	3.4	0.4	BRASS/TIN	14-22	3.8-1.5
	E4412BS-2	8.5	11.2	19.0	-	0.4	BRASS/TIN	14-22	3.8-1.5
	E4317BS-2	5.0	6.0	11.0	3.2	0.4	BRASS/TIN	20-24	2.3-1.5
	E4318BS-2	5.0	6.0	11.0	3.2	0.4	BRASS/TIN	14-18	3.8-1.5
	E462BS-2	12.0	15.0	22.5	6.4	0.6	BRASS/TIN	14-18	3.8-1.5
	E485BS-2	12.0	15.0	22.5	6.4	0.6	BRASS/TIN	14-18	3.8-1.5

# RING TONGUE TERMINAL

unit:mm

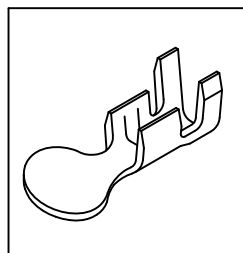


E4012  
E4504

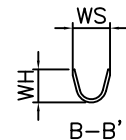
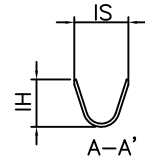
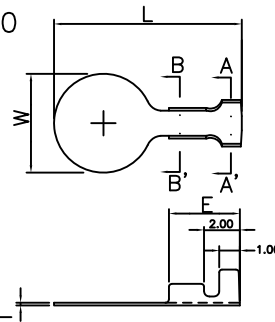


PART/NO.	W	E	L	D	T	IS	IH	WS	WH	MT'L/FINISH	W/R	INS.O.D.
E4012	2.8	3.4	6.5	1.2	0.2	2.7	3.1	1.5	1.5	BRASS/TIN	#26-30	1.3-0.9
E4504	5.5	4.0	10.5	3.2	0.2	2.6	2.1	1.9	1.5	BRASS/TIN	#26-30	1.3-0.9
E425	4.6	4.4	10.7	2.5	0.2	2.7	3.2	2.2	2.2	BRASS/TIN	#26-30	1.3-0.9

unit:mm

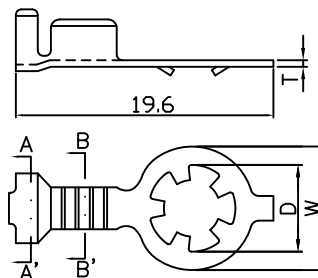
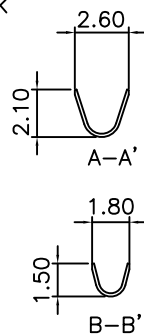


E450



PART/NO.	W	E	L	D	T	IS	IH	WS	WH	MT'L/FINISH	W/R	INS.O.D.
E450	6.5	5.0	10.5	5.5	0.15	2.6	2.1	1.8	1.5	DN	#26-30	1.3-0.9

With Toothed Lock  
E442



PART/NO.	W	L	D	T	IS	IH	WS	WH	MT'L/FINISH	W/R
E442	9.4	19.6	6.6	0.5	5.3	3.2	2.6	2.1	BRASS	#14-22