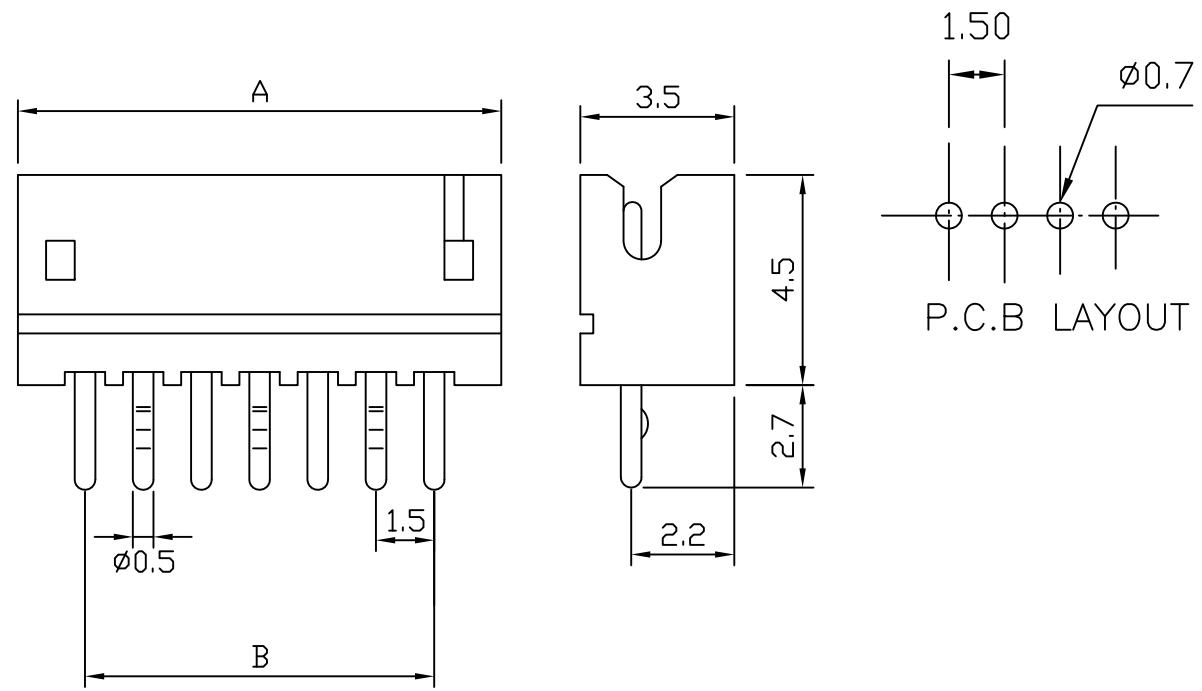


1510PS .059" (1.50mm) PITCH Headers—Straight

unit:mm

Features:

- * MAT'L: BODY: NYLON 66 UL94V-0
PINS: BRASS TIN PLATED
- * MATES WITH : 1510H SERIES HOUSING
- * ACCEPTS WITH: 1510 SERIES TERMINAL



PART NO.	A	B
1510PS-02	4.5	1.5
1510PS-03	6.0	3.0
1510PS-04	7.5	4.5
1510PS-05	9.0	6.0
1510PS-06	10.5	7.5
1510PS-07	12.0	9.0
1510PS-08	13.5	10.5
1510PS-09	15.0	12.0
1510PS-10	16.5	13.5
1510PS-11	18.0	15.0
1510PS-12	19.5	16.5
1510PS-13	21.0	18.0