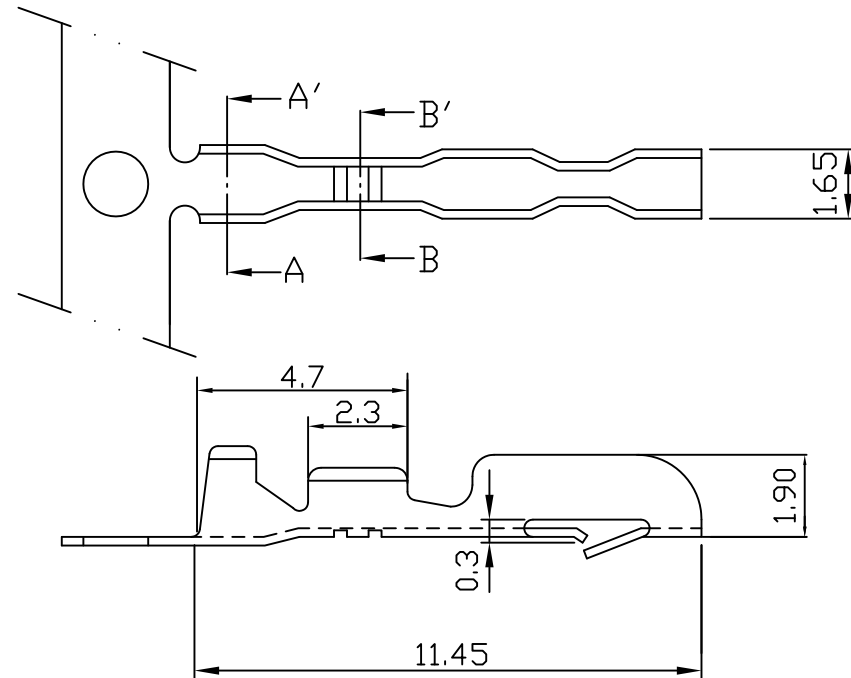
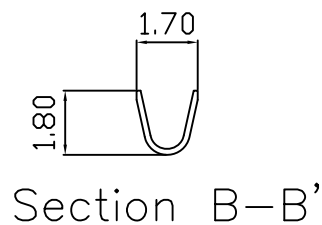
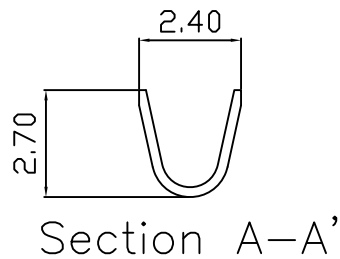


# 2544 .100" (2.54mm) PITCH CRIMP TERMINAL

unit:mm

Features:

- \* THICKNESS : 0.2mm
- \* MAT'L: PHOSPHOR BRONZE & BRASS TIN PLATED
- \* MATES WITH : 2542H-04 SERIES HOUSING
- \* ACCEPTS WITH: 2542PS & 2542PR SERIES WAFER



PART NO.	WIRE RANGE	INSULATION O.D.	MATERIAL	FINISH	QTY/REEL
2544	AWG #22-28	ø1.5~ø1.2mm	Brass	Tin-plated	10,000
2544-P	AWG #22-28	ø1.5~ø1.2mm	Phosphor bronze	Tin-plated	10,000