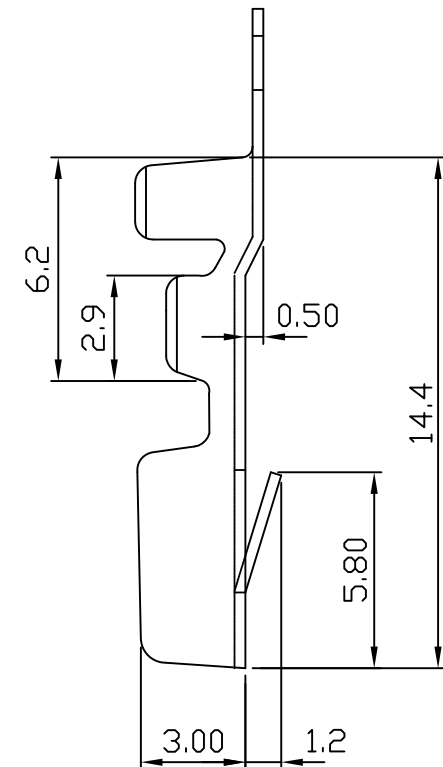
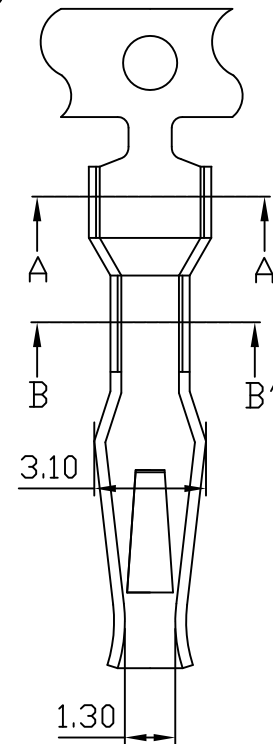
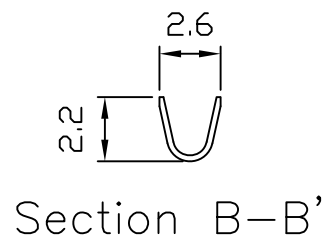
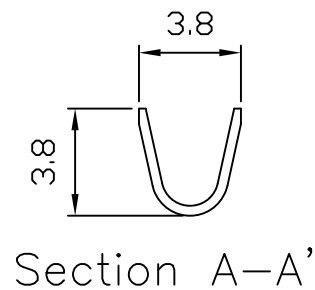


7521-P CRIMP TERMINAL

Features:

- * THICKNESS: 0.3mm
- * MAT'L: PHOSPHOR BRONZE TIN PLATED
- * MATES WITH: 7521H SERIES HOUSING
- * ACCEPTS WITH: 7551 SERIES WAFER

unit:mm



PART NO.	WIRE RANGE	INSULATION O.D.	MATERIAL	FINISH	QTY/REEL
7521-P	#18-#22	ø2.45 mm MAX	PHOSPHOR BRONZE	Tin-plated	6,000