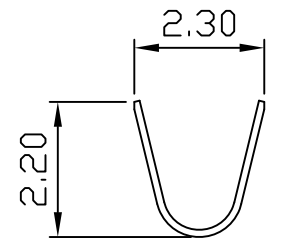


2580 .098" (2.50mm) PITCH CRIMP TERMINAL

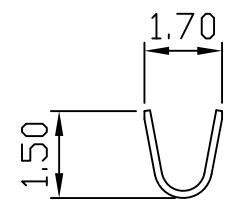
Features:

unit:mm

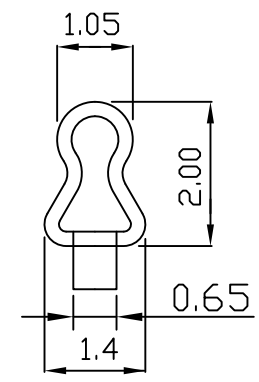
- * THICKNESS: 0.2mm
- * MA'L: PHOSPHOR BRONZE TIN PLATED
- * MATES WITH: 2580H SERIES HOUSING
- * ACCEPTS WITH: 2580PS & 2580PR SERIES WAFER
- * ACCEPTS WITH $\phi 0.7$ mm ROUND PIN



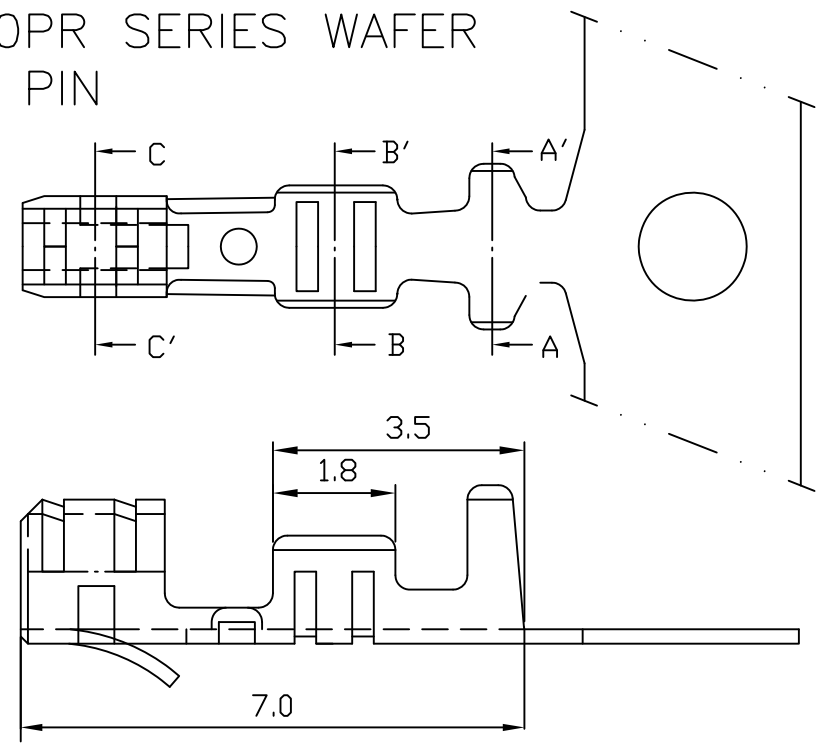
Section A-A'



Section B-B'



Section C-C'



PART NO.	WIRE RANGE	INSULATION O.D.	MATERIAL	FINISH	QTY/REEL
2580-P	AWG #22-#28	$\phi 1.8$ mm MAX	Phosphor bronze	Tin-plated	10,000