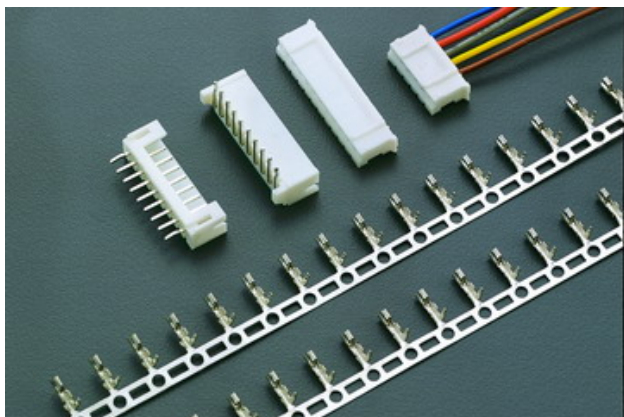


2020 SERIES

.079" (2.0mm) PITCH WIRE TO BOARD CONNECTOR



Specifications

Current rating: 1A AC,DC

Voltage rating: 250V AC,DC

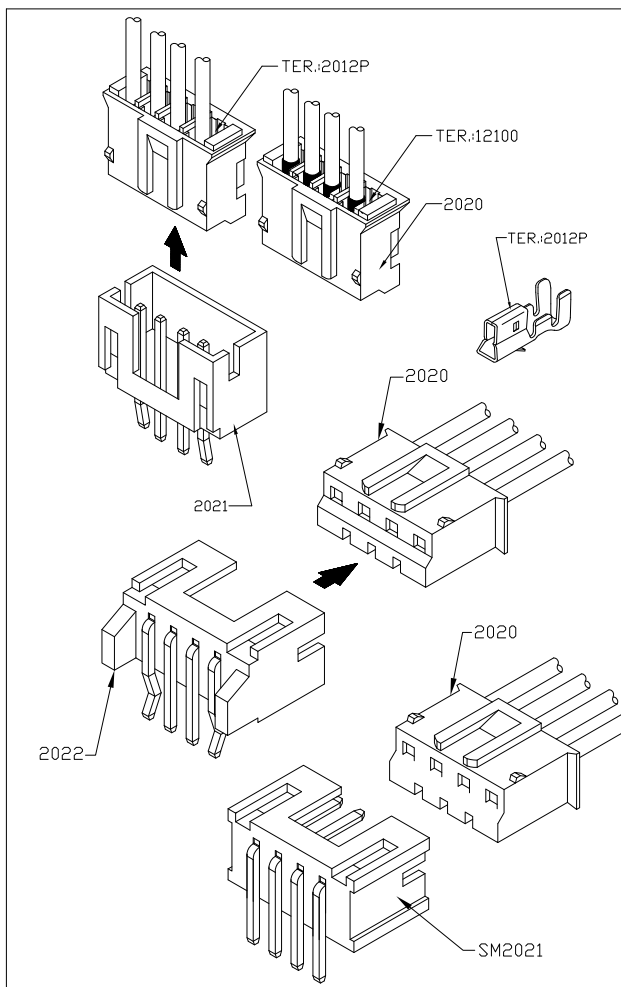
Temperature range: -25°C to $+85^{\circ}\text{C}$
(including temperature rise)

Contact resistance: Initial value/10m Ω Max.
After environmental testing/20m Ω Max.

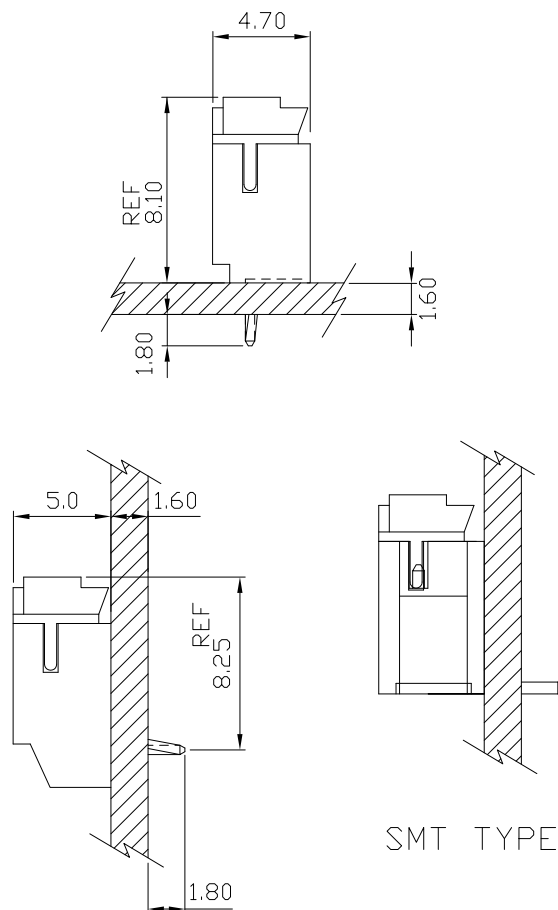
Insulation resistance: 1000M Ω MIN.

Withstanding voltage: 1000V AC/minute

Applicable wire: AWG#24-30



Assembly layout

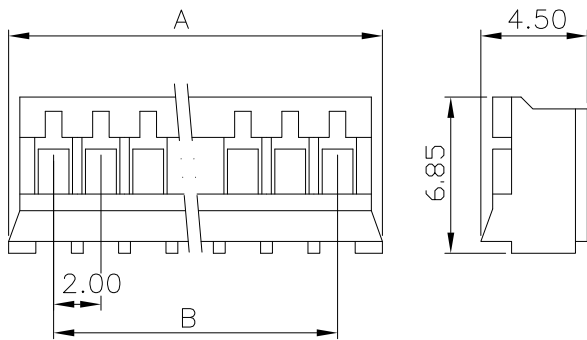


2020 .079" (2.0mm) PITCH HOUSING

Features:

unit:mm

- * MAT'L: NYLON 66 UL94V-0
- * MATES WITH: 2012P SERIES TERMINAL
- * ACCEPTS WITH 2021 & 2022 SERIES WAFER



PART NO.	A	B
2020-02	5.8	2.0
2020-03	7.8	4.0
2020-04	9.8	6.0
2020-05	11.8	8.0
2020-06	13.8	10.0
2020-07	15.8	12.0
2020-08	17.8	14.0
2020-09	19.8	16.0
2020-10	21.8	18.0
2020-11	23.8	20.0

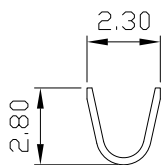
PART NO.	A	B
2020-12	25.8	22.0
2020-13	27.8	24.0
2020-14	29.8	26.0
2020-15	31.8	28.0
2020-16	33.8	30.0
2020-17	35.8	32.0
2020-18	37.8	34.0
2020-19	39.8	36.0
2020-20	41.8	38.0

2012P .079" (2.0mm) PITCH CRIMP TERMINAL

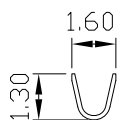
Features:

unit:mm

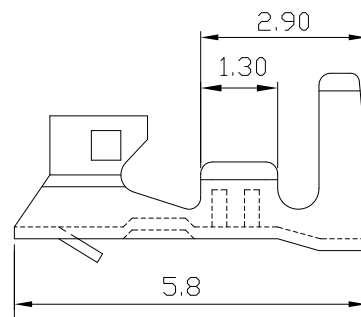
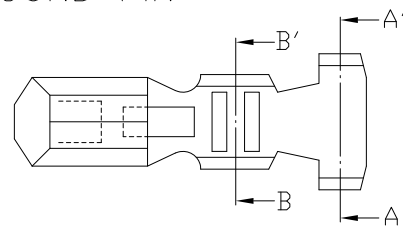
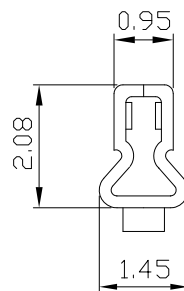
- * THICKNESS: 0.20mm
- * MATES WITH: 2020 SERIES HOUSING
- * ACCEPTS WITH: 2021 & 2022 SERIES WAFER
- * ACCEPTS: 0.5mm(.02") SQUARE OR ROUND PIN



Section A-A'



Section B-B'



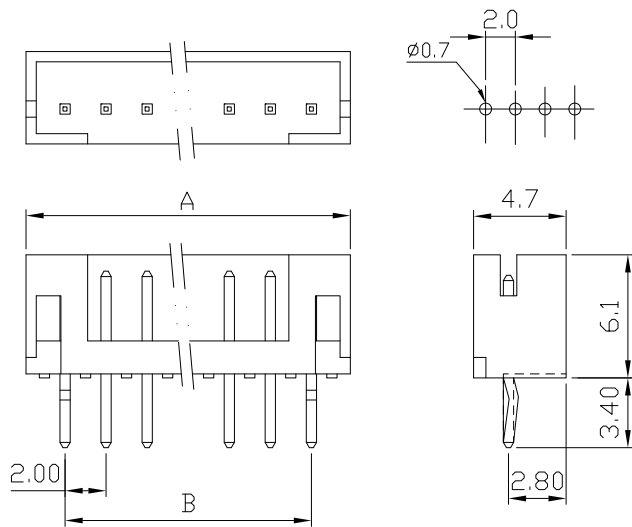
PART NO.	WIRE RANGE	INSULATION O.D.	MATERIAL	FINISH	QTY/REEL
2012-P	AWG#24-#30	ø1.4mm MAX	PHOSPHOR BRONZE	Tin-plated	10,000

2021 .079" (2.0mm) PITCH Headers-Straight

Features:

unit:mm

- * MAT'L: BODY: NYLON 66 UL 94V-0
PINS: BRASS TIN PLATED
- * MATES WITH 2020 SERIES HOUSING
- * 0.5mm(.02") STRAIGHT SQ. PIN



PART NO.	A	B
2021-02	6.0	2.0
2021-03	8.0	4.0
2021-04	10.0	6.0
2021-05	12.0	8.0
2021-06	14.0	10.0
2021-07	16.0	12.0
2021-08	18.0	14.0
2021-09	20.0	16.0
2021-10	22.0	18.0
2021-11	24.0	20.0

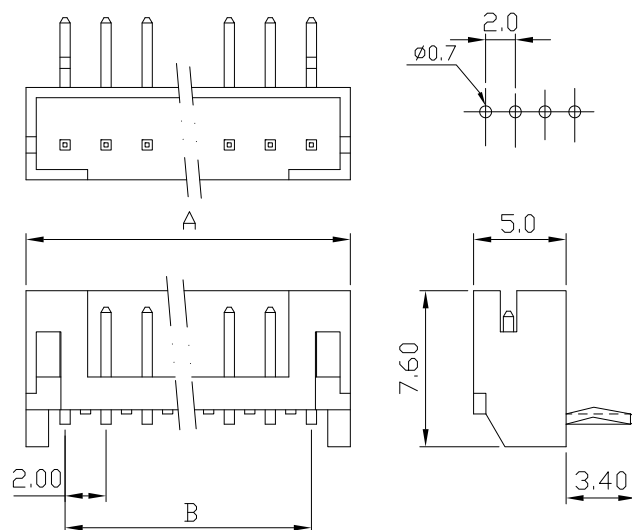
PART NO.	A	B
2021-12	26.0	22.0
2021-13	28.0	24.0
2021-14	30.0	26.0
2021-15	32.0	28.0
2021-16	34.0	30.0
2021-17	36.0	32.0
2021-18	38.0	34.0
2021-19	40.0	36.0
2021-20	42.0	38.0

2022 .079" (2.0mm) PITCH Headers-Right Angle

Features:

unit:mm

- * MAT'L: BODY: NYLON 66 UL 94V-0
PINS: BRASS TIN PLATED
- * MATES WITH 2020 SERIES HOUSING
- * 0.5mm(.02") STRAIGHT SQ. PIN



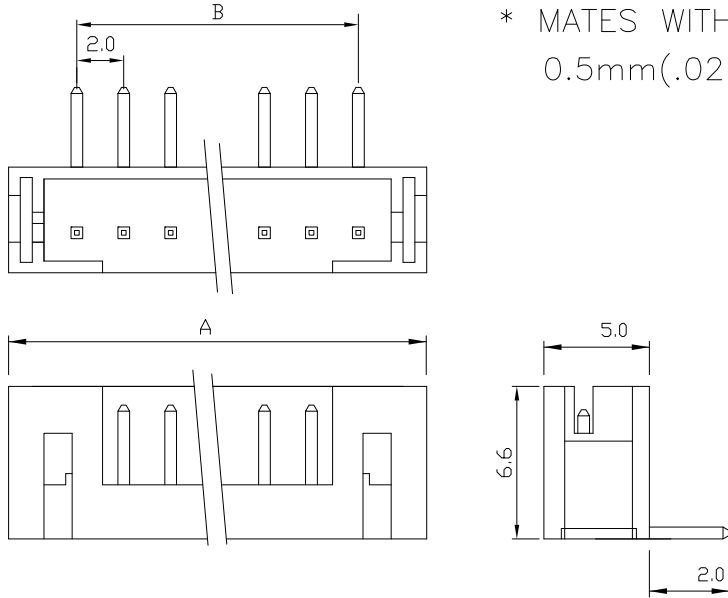
PART NO.	A	B
2022-02	6.0	2.0
2022-03	8.0	4.0
2022-04	10.0	6.0
2022-05	12.0	8.0
2022-06	14.0	10.0
2022-07	16.0	12.0
2022-08	18.0	14.0
2022-09	20.0	16.0
2022-10	22.0	18.0
2022-11	24.0	20.0

PART NO.	A	B
2022-12	26.0	22.0
2022-13	28.0	24.0
2022-14	30.0	26.0
2022-15	32.0	28.0
2022-16	34.0	30.0
2022-17	36.0	32.0
2022-18	38.0	34.0
2022-19	40.0	36.0
2022-20	42.0	38.0

SM2021 .079" (2.0mm) PITCH Headers-Right Angle

Features:(SMT)

- * MAT'L: BODY: NYLON 6T UL 94V-0
PINS: BRASS TIN PLATED
- * MATES WITH 2020 SERIES HOUSING
0.5mm(.02") STRAIGHT SQ. PIN



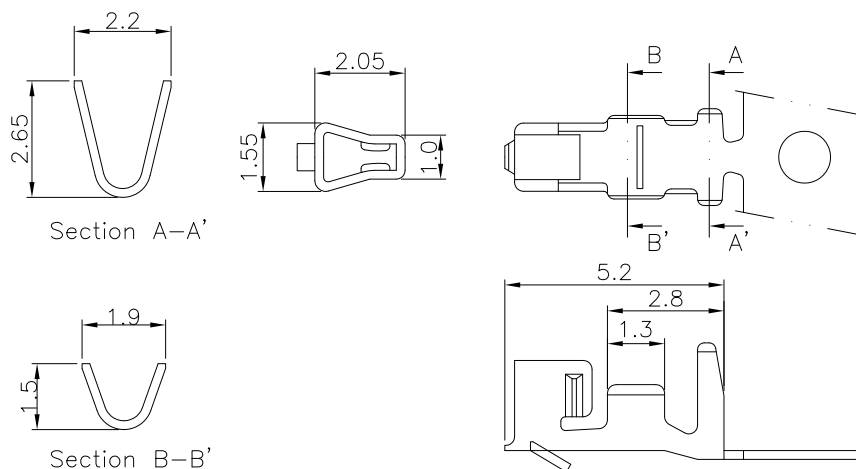
PART NO.	A	B
SM2021- 02	7.9	2.0
SM2021- 03	9.9	4.0
SM2021- 04	11.9	6.0
SM2021- 05	13.9	8.0
SM2021- 06	15.9	10.0
SM2021- 07	17.9	12.0
SM2021- 08	19.9	14.0
SM2021- 09	21.9	16.0
SM2021- 10	23.9	18.0
SM2021- 11	23.8	20.0
SM2021- 12	25.8	22.0
SM2021- 13	27.8	24.0
SM2021- 14	29.8	26.0
SM2021- 15	31.8	28.0
SM2021- 16	35.9	30.0

12100 .079" (2.0mm) PITCH TERMINAL

Features:

unit:mm

- * THICKNESS: 0.2 mm
- * MAT'L: PHOSPHOR BRONZE TIN PLATED
- * MATES WITH: 12100H SERIES HOUSING



PART NO.	WIRE RANGE	MATERIAL	FINISH	QTY/REEL
12100	AWG#26-28	Phosphor Bronze	Tin-plated	10,000