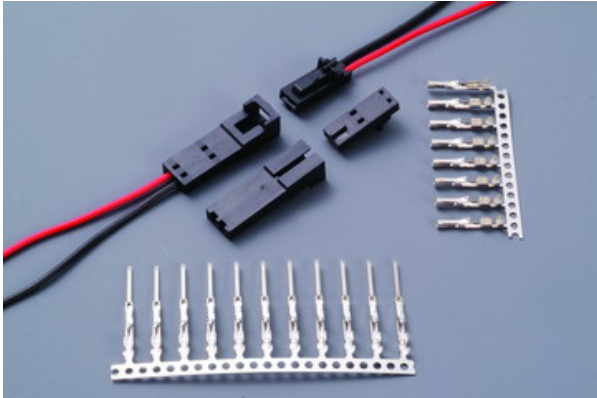


2550HK/2550CH SERIES

.100" (2.54mm) PITCH WIRE TO BOARD CONNECTOR



Specifications

Current rating: 3A AC,DC

Voltage rating: 250V AC,DC

Temperature range: -25°C to $+85^{\circ}\text{C}$
(including temperature rise)

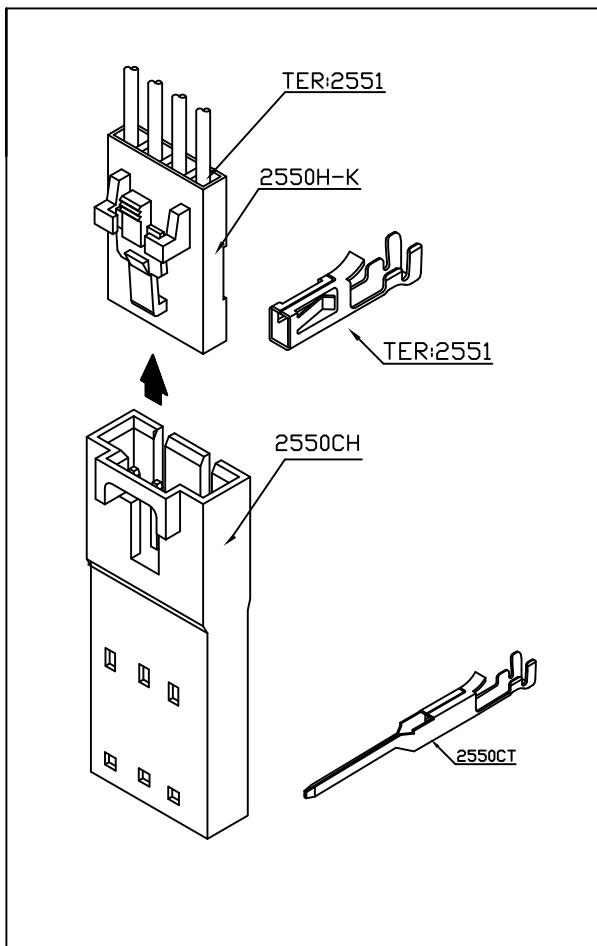
Contact resistance: Initial value/10m Ω Max.

After environmental testing/20m Ω Max.

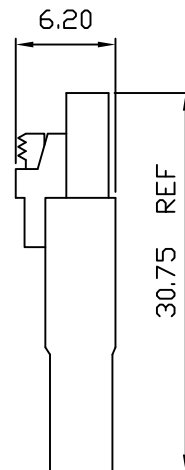
Insulation resistance: 500M Ω MIN.

Withstanding voltage: 1000V AC/minute

Applicable wire: AWG#24-28



Assembly layout

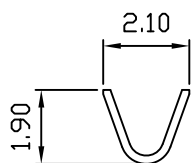


2551 .100" (2.54mm) PITCH CRIMP TERMINAL

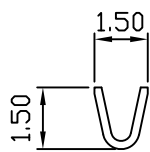
Features:

unit:mm

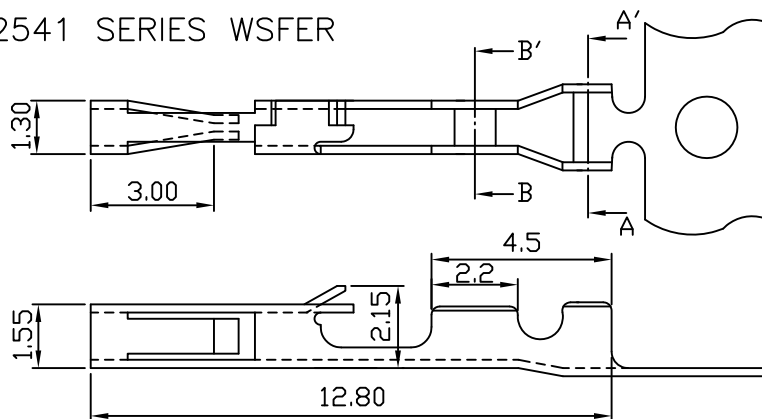
- * THICKNESS: 0.2mm
- * MAT'L: PHOSPHOR BRONZE TIN OR GOLD PLATED
- * MATES WITH: 2550 SERIES HOUSING
- * ACCEPTS WITH: 2540 & 2541 SERIES WSFER



Section A-A'



Section B-B'



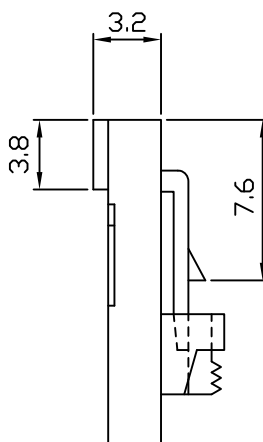
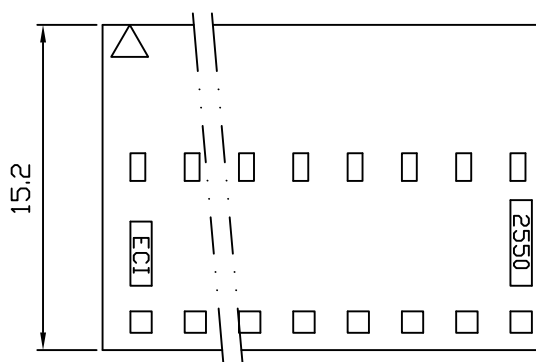
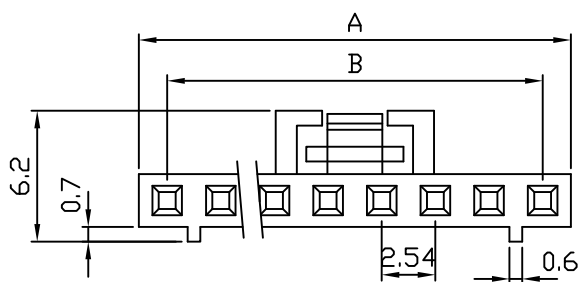
PART NO.	WIRE RANGE	INSULATION O.D.	MATERIAL	FINISH	QTY/REEL
2551-P	AWG#24-#28	ø1.7mm MAX	PHOSPHOR BRONZE	TIN OR GOLD PLATED	10,000

2550H-K .100" (2.54mm) PITCH CRIMP HOUSING

Features:

unit:mm

- * MAT'L: PBT UL94V-0
- * MATES WITH 2551 SERIES TERMINAL
- * ACCEPTS WITH: 2550PS-K & 2550PR-K SERIES WAFER



PART NO.	A	B
2550H-02K	5.05	2.54
2550H-03K	7.59	5.08
2550H-04K	10.13	7.62
2550H-05K	12.67	10.16
2550H-06K	15.21	12.70
2550H-07K	17.75	15.24
2550H-08K	20.29	17.77
2550H-09K	22.83	20.32
2550H-10K	25.37	22.86
2550H-11K	27.91	25.40
2550H-12K	30.45	27.94
2550H-13K	32.99	30.48
2550H-14K	35.53	33.02
2550H-15K	38.07	35.56
2550H-16K	40.61	38.10
2550H-17K	43.15	40.64
2550H-18K	45.69	43.18
2550H-19K	48.23	45.72
2550H-20K	50.77	48.26
2550H-21K	53.31	50.80
2550H-22K	55.85	53.34
2550H-23K	58.39	55.88
2550H-24K	60.93	58.42
2550H-25K	63.47	60.96

2550CH .100" (2.54mm) PITCH HOUSING

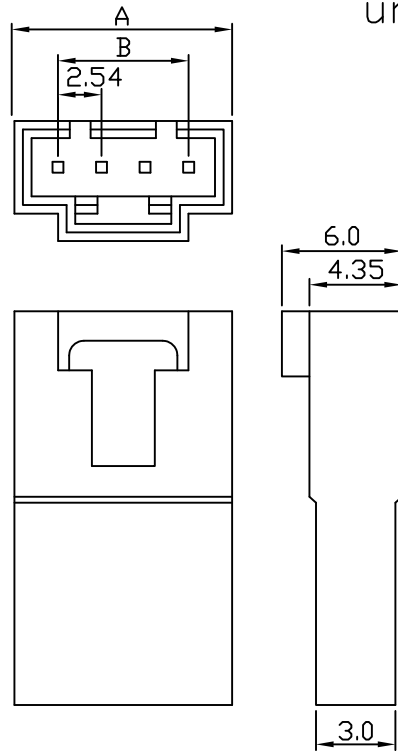
Features:

- * MAT'L: BODY: NORYL 94V-0
PINS: BRASS TIN PLATED
- * MATES WITH: 2550CT SERIES TERMINAL
- * ACCEPTS WITH 2550H-K SERIES HOUSING

unit:mm

PART NO.	A	B
2550CH-02	7.12	2.54
2550CH-03	9.66	5.08
2550CH-04	12.20	7.62
2550CH-05	14.74	10.16
2550CH-06	17.28	12.70
2550CH-07	19.82	15.24
2550CH-08	22.36	17.78
2550CH-09	24.90	20.32
2550CH-10	27.44	22.86
2550CH-11	29.98	25.40
2550CH-12	32.52	27.94
2550CH-13	35.06	30.48
2550CH-14	37.60	33.02
2550CH-15	40.14	35.56
2550CH-16	42.68	38.10
2550CH-17	45.22	40.64
2550CH-18	47.76	43.18

PART NO.	A	B
2550CH-19	50.30	45.72
2550CH-20	52.84	48.26
2550CH-21	55.38	50.80
2550CH-22	57.92	53.34
2550CH-23	60.46	55.88
2550CH-24	63.00	58.42
2550CH-25	65.54	60.96

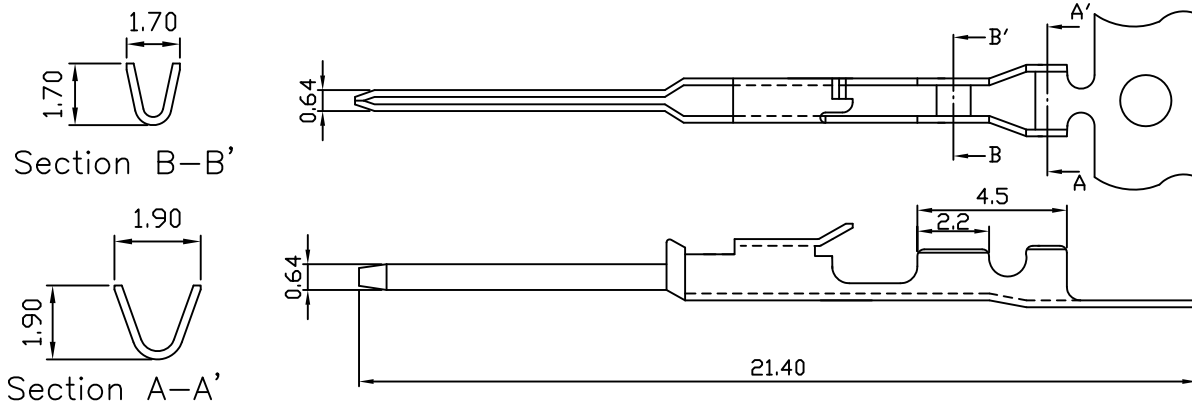


2550CT .100" (2.54mm) PITCH TERMINAL

Features:

- * THICKNESS: 0.2mm
- * MAT'L: BRASS TIN PLATED
- * MATES WITH: 2550CH SERIES HOUSING
- * ACCEPTS WITH: 2551 SERIES TERMINAL

unit:mm



PART NO.	WIRE RANGE	INSULATION O.D.	MATERIAL	FINISH	QTY/REEL
2550CT	AWG#24-#28		BRASS	TIN PLATED	