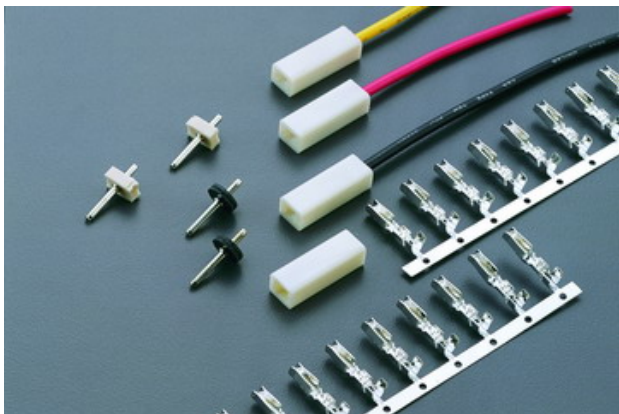


7521H SERIES

WIRE TO BOARD CONNECTOR



Specifications

Current rating: 5A AC,DC

Voltage rating: 250V AC,DC

Temperature range: -25°C to $+85^{\circ}\text{C}$
(including temperature rise)

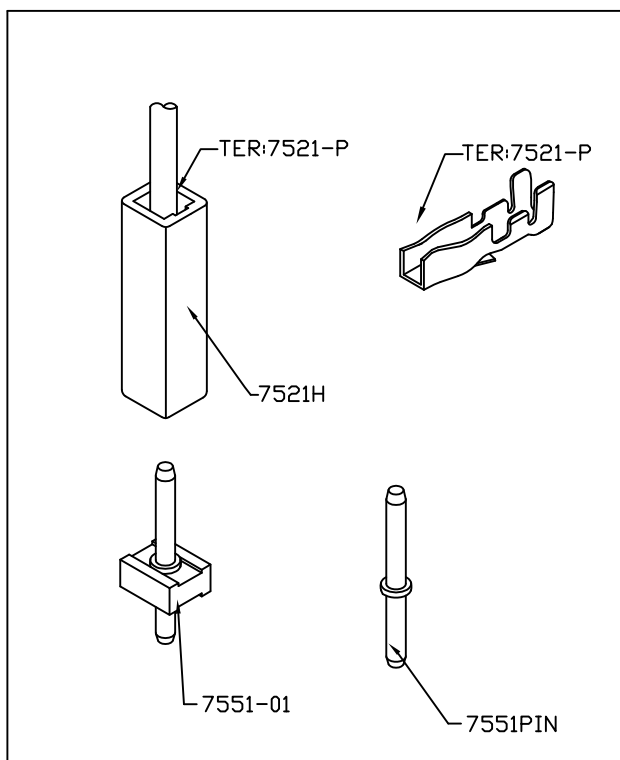
Contact resistance: Initial value/ $10\text{m}\Omega$ Max.

After environmental testing/ $20\text{m}\Omega$ Max.

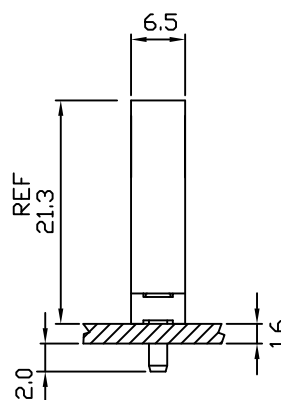
Insulation resistance: $500\text{M}\Omega$ MIN.

Withstanding voltage: 1000V AC /minute

Applicable wire: AWG#18-22



Assembly layout



7521H 7551-01

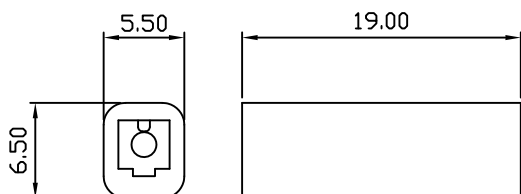
HOUSING & Headers—Straight

Features:

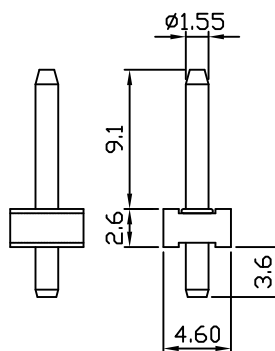
unit:mm

- * MAT'L: BODY: NYLON 66 UL94V-2
PINS: BRASS TIN PLATED
- * MATES WITH 7551 SERIES WAFER
- * ACCEPTS WITH 7521 SERIES TERMINAL

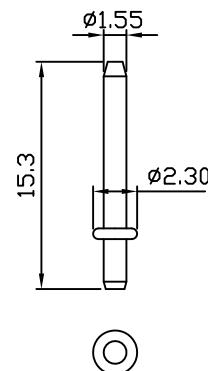
7521H



7551-01



7551-PIN

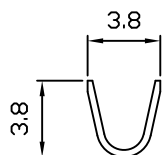


7521-P CRIMP TERMINAL

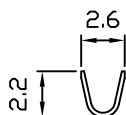
Features:

unit:mm

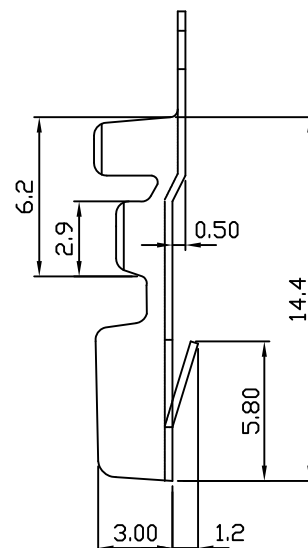
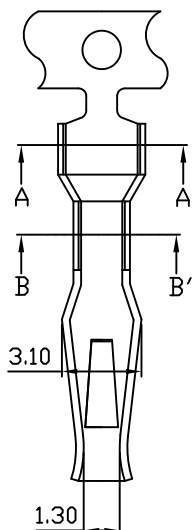
- * THICKNESS: 0.3mm
- * MAT'L: PHOSPHOR BRONZE TIN PLATED
- * MATES WITH: 7521H SERIES HOUSING
- * ACCEPTS WITH: 7551 SERIES WAFER



Section A-A'



Section B-B'



PART NO.	WIRE RANGE	INSULATION O.D.	MATERIAL	FINISH	QTY/REEL
7521-P	#18-#22	ø2.45 mm MAX	PHOSPHOR BRONZE	Tin-plated	6,000