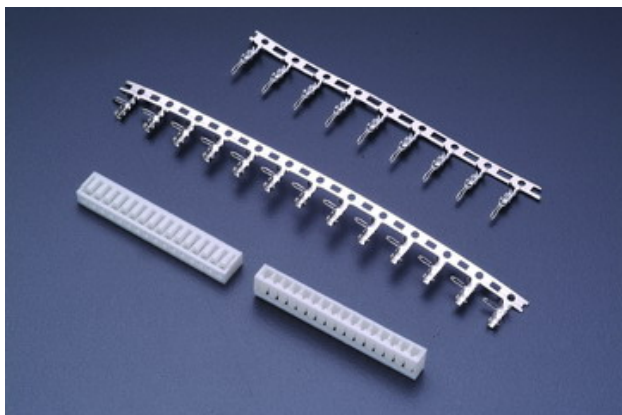


2010 SERIES

.079" (2.0mm) PITCH BOARD IN CONNECTOR



Specifications

Current rating: 3A AC,DC

Voltage rating: 250V AC,DC

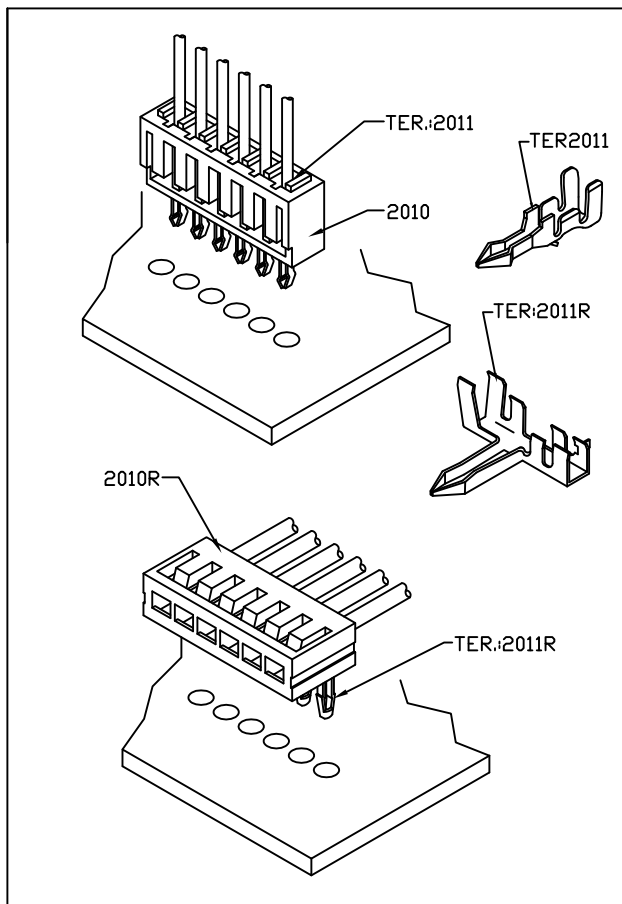
Temperature range: -25°C to +85°C
(including temperature rise)

Contact resistance: Initial value/10mΩ Max.
After environmental testing/20mΩ Max.

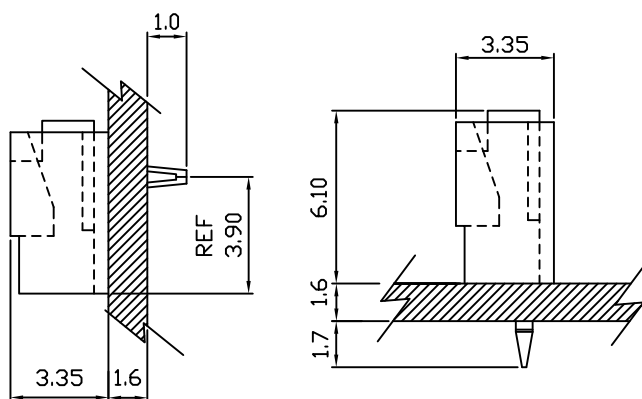
Insulation resistance: 1000MΩ MIN.

Withstanding voltage: 800V AC/minute

Applicable wire: AWG#24-30



Assembly layout

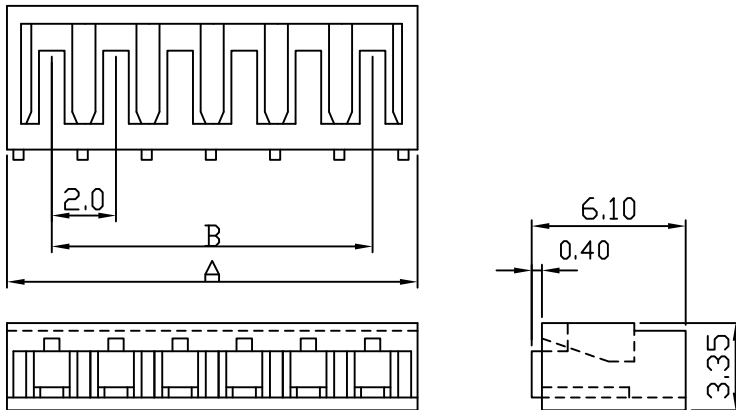


2010 .079" (2.0mm) BOARD TERMINAL HOUSING

Features:

unit:mm

- * MAT'L: NYLON 66 UL94V-0
- * MATES WITH: 2011 SERIES TERMINAL



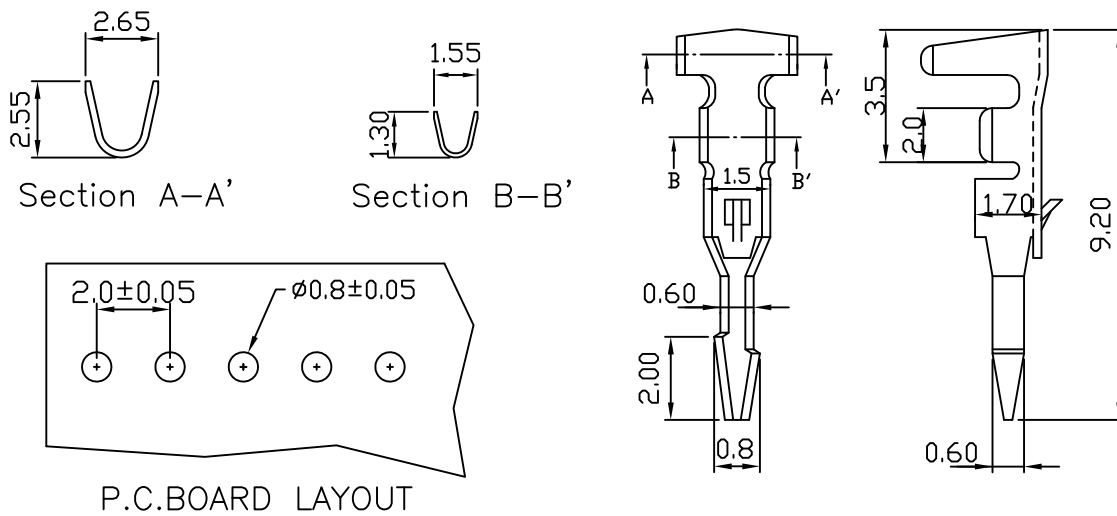
| PART NO. | A | B |
|----------|------|------|
| 2010- 02 | 5.2 | 2.0 |
| 2010- 03 | 7.2 | 4.0 |
| 2010- 04 | 9.2 | 6.0 |
| 2010- 05 | 11.2 | 8.0 |
| 2010- 06 | 13.2 | 10.0 |
| 2010- 07 | 15.2 | 12.0 |
| 2010- 08 | 17.2 | 14.0 |
| 2010- 09 | 19.2 | 16.0 |
| 2010- 10 | 21.2 | 18.0 |
| 2010- 11 | 23.2 | 20.0 |
| 2010- 12 | 25.2 | 22.0 |
| 2010- 13 | 27.2 | 24.0 |
| 2010- 14 | 29.2 | 26.0 |
| 2010- 15 | 31.2 | 28.0 |
| 2010- 16 | 33.2 | 30.0 |
| 2010- 17 | 35.2 | 32.0 |
| 2010- 18 | 37.2 | 34.0 |
| 2010- 19 | 39.2 | 36.0 |
| 2010- 20 | 41.2 | 38.0 |

2011 BOARD IN TERMINAL

Features:

unit:mm

- * THICKNESS: 0.2mm
- * MAT'L: BRASS TIN PLATED
- * MATES WITH: 2010 SERIES HOUSING
- * TERMINAL SOLDER DIRECTLY TO P.C.B
- * SUITABLE FOR 1.6mm OR 1.2mm THICKNESS P.C.B



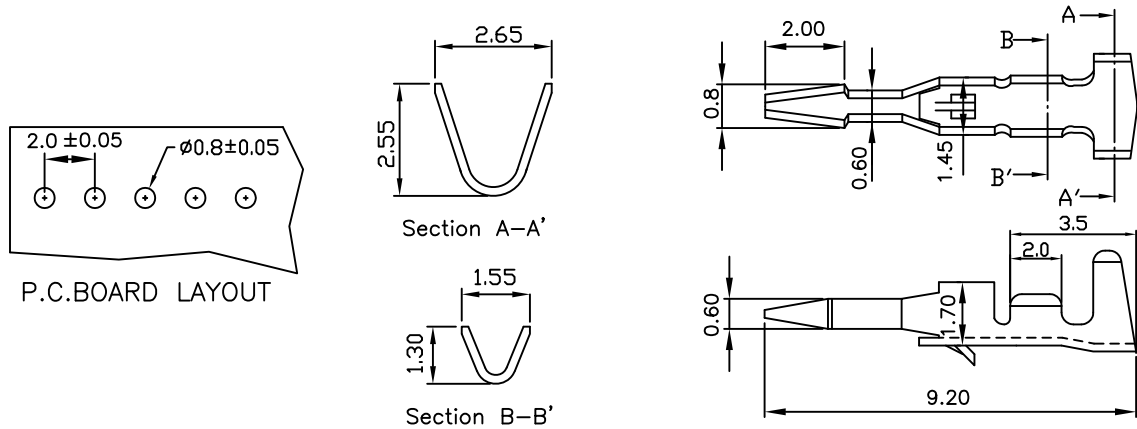
| PART NO. | WIRE RANGE | INSULATION O.D. | MATERIAL | FINISH | QTY/REEL |
|----------|------------|-----------------|----------|------------|----------|
| 2011 | AWG#24-#30 | ø1.4mm MAX | BRASS | Tin-plated | 10,000 |

2011A .079" (2.0mm) PITCH BOARD IN TERMINAL

Features:

unit:mm

- * THICKNESS: 0.2mm
- * MAT'L: BRASS TIN PLATED
- * MATES WITH: 2010 SERIES HOUSING
- * TERMINAL SOLDER DIRECTLY TO P.C.B
- * SUITABLE FOR 1.6mm OR 1.2mm THICKNESS P.C.B



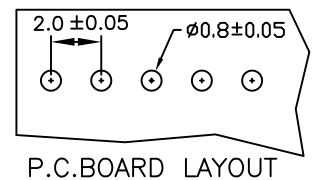
| PART NO. | WIRE RANGE | INSULATION O.D. | MATERIAL | FINISH | QTY/REEL |
|----------|------------|-----------------|----------|------------|----------|
| 2011A | AWG#24-#30 | ø1.4mm max | BRASS | Tin-plated | 10,000 |

2011R 2011SR .079" (2.0mm) PITCH BOARD IN TERMINAL

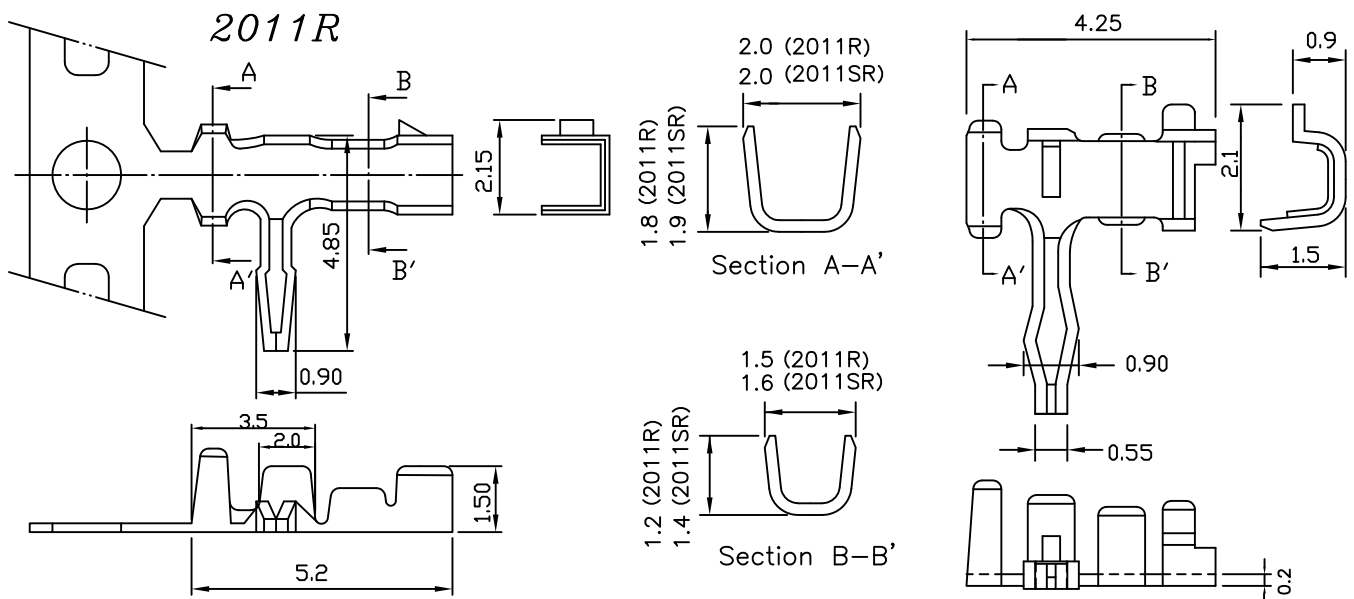
Features:

unit:mm

- * THICKNESS: 0.2mm
- * MAT'L: BRASS TIN PLATED
- * MATES WITH: 2010R SERIES HOUSING
- * TERMINAL SOLDER DIRECTLY TO P.C.B
- * SUITABLE FOR 1.6mm OR 1.2mm THICKNESS P.C.B



2011SR



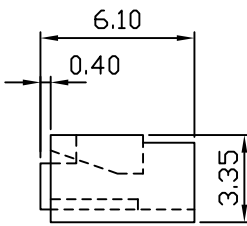
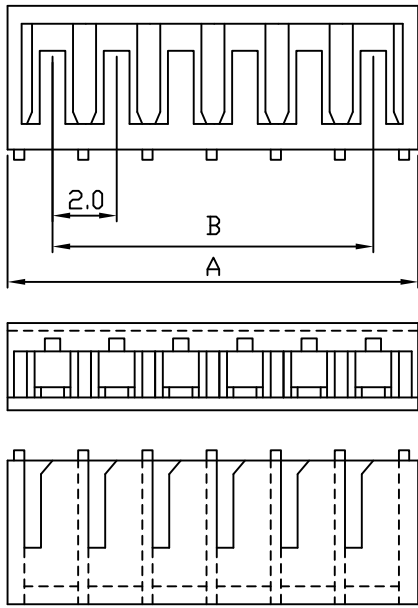
| PART NO. | WIRE RANGE | INSULATION O.D. | MATERIAL | FINISH | QTY/REEL |
|----------|------------|-----------------|----------|------------|----------|
| 2011R | AWG#24-#30 | ø1.4mm MAX | BRASS | Tin-plated | 10,000 |
| 2011SR | AWG#24-#30 | ø1.4mm MAX | BRASS | Tin-plated | 10,000 |

2010R .079" (2.0mm) PITCH BOARD TERMINAL HOUSING

unit:mm

Features:

- * MAT'L: NYLON 66 UL94V-2
- * MATES WITH: 2011R SERIES TERMINAL



| PART NO. | A | B |
|----------|------|------|
| 2010R-02 | 5.2 | 2.0 |
| 2010R-03 | 7.2 | 4.0 |
| 2010R-04 | 9.2 | 6.0 |
| 2010R-05 | 11.2 | 8.0 |
| 2010R-06 | 13.2 | 10.0 |
| 2010R-07 | 15.2 | 12.0 |
| 2010R-08 | 17.2 | 14.0 |
| 2010R-09 | 19.2 | 16.0 |
| 2010R-10 | 21.2 | 18.0 |
| 2010R-11 | 23.2 | 20.0 |
| 2010R-12 | 25.2 | 22.0 |
| 2010R-13 | 27.2 | 24.0 |
| 2010R-14 | 29.2 | 26.0 |
| 2010R-15 | 31.2 | 28.0 |
| 2010R-16 | 33.2 | 30.0 |
| 2010R-17 | 35.2 | 32.0 |
| 2010R-18 | 37.2 | 34.0 |
| 2010R-19 | 39.2 | 36.0 |
| 2010R-20 | 41.2 | 38.0 |