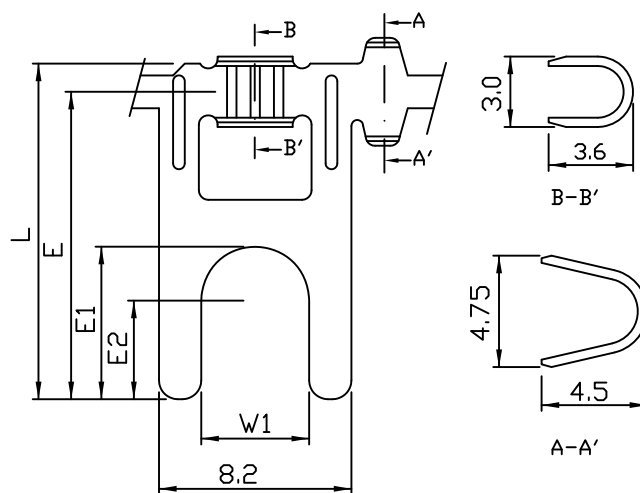


**Y311R Y543R Y556R CRIMP TERMINAL**

Features:

unit:mm

- \* MATERIAL: BRASS
- \* THICKNESS: 0.4mm
- \* TREATMENT: TIN PLATED BEFORE STAMPING
- \* WIRE RANGE: AWG#18-22



PART NO.	L	E	E1	E2	W1	INSULATION O.D.	QTY/REEL
Y311R	14.3	13.1	6.05	4.2	3.7	ø3.7~ø1.5mm	4,000
Y543R	14.3	13.1	6.5	4.2	4.6	ø3.7~ø1.5mm	4,000
Y556R	14.3	13.1	6.9	4.2	5.4	ø3.7~ø1.5mm	4,000