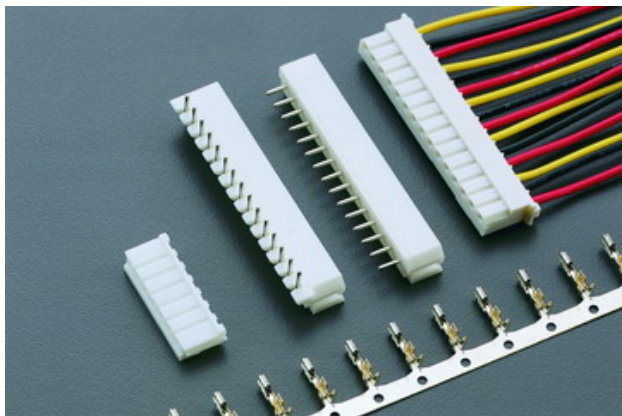


2580H SERIES

.098" (2.50mm) PITCH WIRE TO BOARD CONNECTOR



Specifications

Current rating: 3A AC,DC

Voltage rating: 250V AC,DC

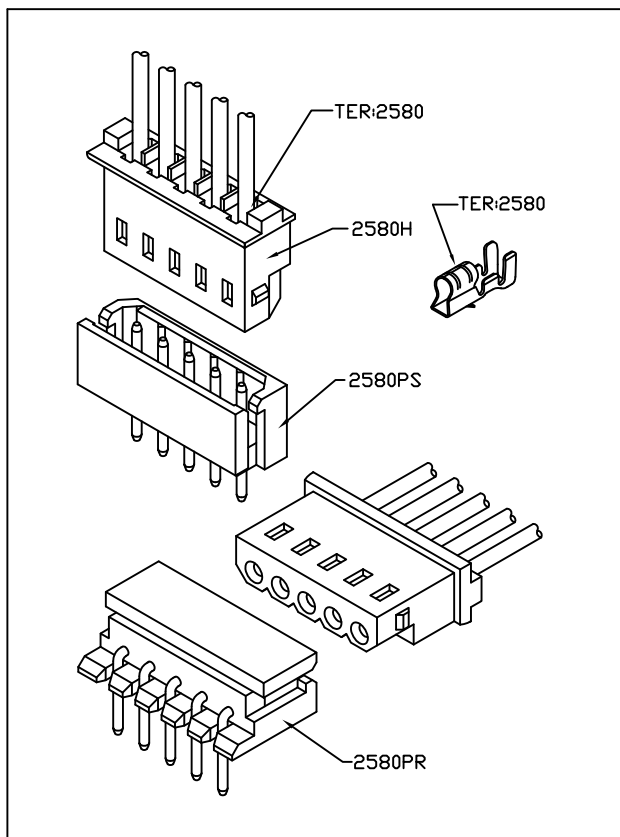
Temperature range: -25°C to $+85^{\circ}\text{C}$
(including temperature rise)

Contact resistance: Initial value/10m Ω Max.
After environmental testing/20m Ω Max.

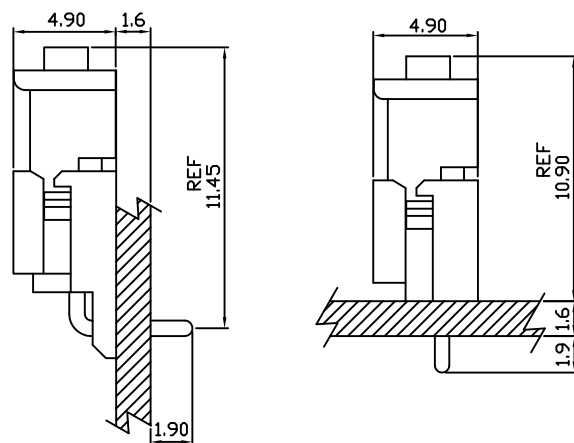
Insulation resistance: 1000M Ω MIN.

Withstanding voltage: 800V AC/minute

Applicable wire: AWG#22-28



Assembly layout

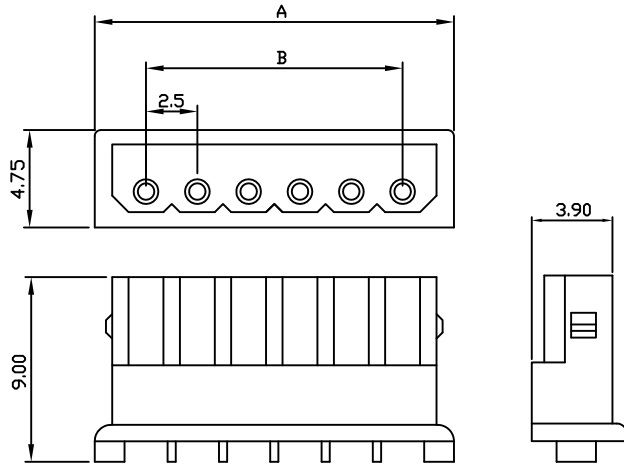


2580H .098" (2.50mm) PITCH CRIMP HOUSING

unit:mm

Features:

- * MAT'L: NYLON 66 UL94V-0
- * MATES WITH: 2580 SERIES TERMINAL
- * ACCEPTS WITH: 2580PS & 2580PR SERIES WAFER



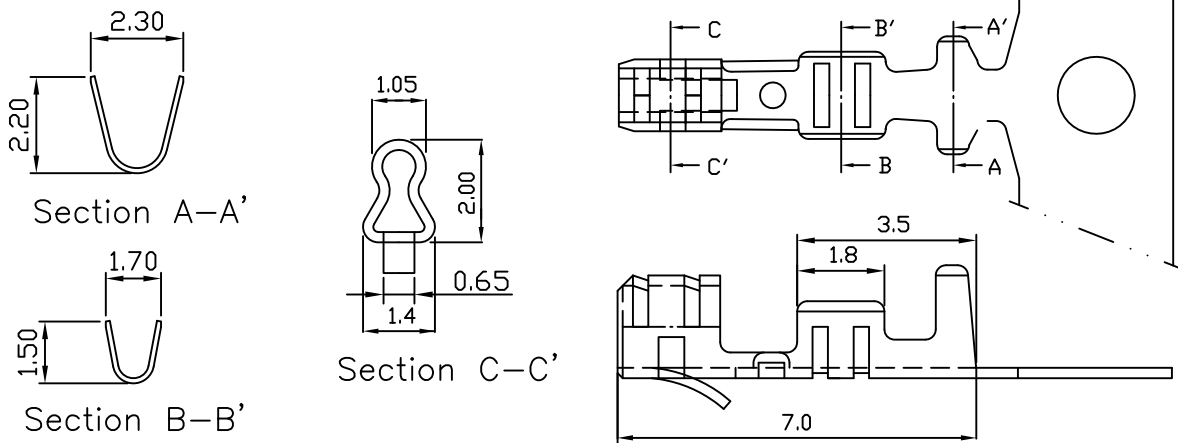
PART NO.	A	B
2580H-02	7.5	2.5
2580H-03	10.0	5.0
2580H-04	12.5	7.5
2580H-05	15.0	10.0
2580H-06	17.5	12.5
2580H-07	20.0	15.0
2580H-08	22.5	17.5
2580H-09	25.0	20.0
2580H-10	27.5	22.5
2580H-11	30.0	25.0
2580H-12	32.5	27.5
2580H-13	35.0	30.0
2580H-14	37.5	32.5
2580H-15	40.0	35.0
2580H-16	42.5	37.5
2580H-17	45.0	40.0
2580H-18	47.5	42.5
2580H-19	50.0	45.0
2580H-20	52.5	47.5

2580 .098" (2.50mm) PITCH CRIMP TERMINAL

unit:mm

Features:

- * THICKNESS: 0.2mm
- * MA'L: PHOSPHOR BRONZE TIN PLATED
- * MATES WITH: 2580H SERIES HOUSING
- * ACCEPTS WITH: 2580PS & 2580PR SERIES WAFER
- * ACCEPTS WITH $\phi 0.7$ mm ROUND PIN



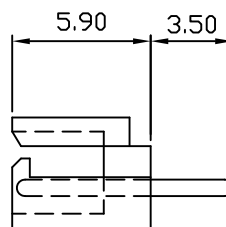
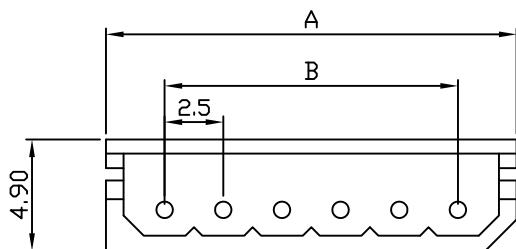
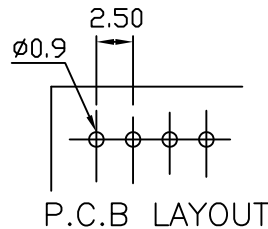
PART NO.	WIRE RANGE	INSULATION O.D.	MATERIAL	FINISH	QTY/REEL
2580-P	AWG #22-#28	$\phi 1.8$ mm MAX	Phosphor bronze	Tin-plated	10,000

2580PS .098" (2.50mm) PITCH Headers—Straight

Features:

unit:mm

- * MAT'L: BODY: NYLON 66 UL 94V-0
PINS: $\phi 0.7$ mm ROUND PIN
BRASS TIN PLATED
- * MATES WITH: 2580 SERIES TERMINAL
- * ACCEPTS WITH: 2580H SERIES HOUSING



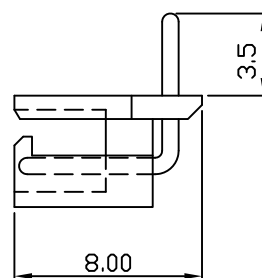
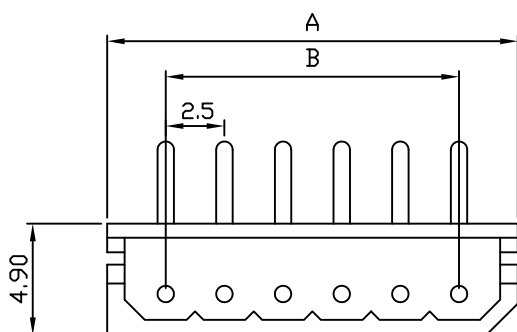
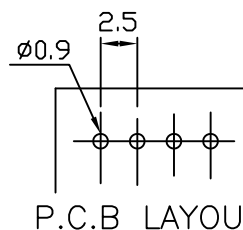
PART NO.	A	B
2580PS-02	7.5	2.5
2580PS-03	10.0	5.0
2580PS-04	12.5	7.5
2580PS-05	15.0	10.0
2580PS-06	17.5	12.5
2580PS-07	20.0	15.0
2580PS-08	22.5	17.5
2580PS-09	25.0	20.0
2580PS-10	27.5	22.5
2580PS-11	30.0	25.0
2580PS-12	32.5	27.5
2580PS-13	35.0	30.0
2580PS-14	37.5	32.5
2580PS-15	40.0	35.0
2580PS-16	42.5	37.5
2580PS-17	45.0	40.0
2580PS-18	47.5	42.5
2580PS-19	50.0	45.0
2580PS-20	52.5	47.5

2580PR .098" (2.50mm) PITCH Headers—Right Angle

Features:

unit:mm

- * MAT'L: BODY: NYLON 66 UL 94V-0
PINS: $\phi 0.7$ mm ROUND PIN
BRASS TIN PLATED
- * MATES WITH: 2580 SERIES TERMINAL
- * ACCEPTS WITH: 2580H SERIES HOUSING



PART NO.	A	B
2580PR-02	7.5	2.5
2580PR-03	10.0	5.0
2580PR-04	12.5	7.5
2580PR-05	15.0	10.0
2580PR-06	17.5	12.5
2580PR-07	20.0	15.0
2580PR-08	22.5	17.5
2580PR-09	25.0	20.0
2580PR-10	27.5	22.5
2580PR-11	30.0	25.0
2580PR-12	32.5	27.5
2580PR-13	35.0	30.0
2580PR-14	37.5	32.5
2580PR-15	40.0	35.0
2580PR-16	42.5	37.5
2580PR-17	45.0	40.0
2580PR-18	47.5	42.5
2580PR-19	50.0	45.0
2580PR-20	52.5	47.5