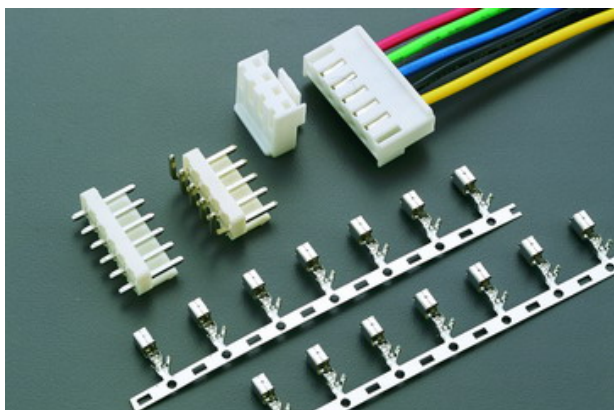


3960 SERIES

.156" (3.96mm) PITCH WIRE TO BOARD CONNECTOR



Specifications

Current rating: 5A AC,DC

Voltage rating: 250V AC,DC

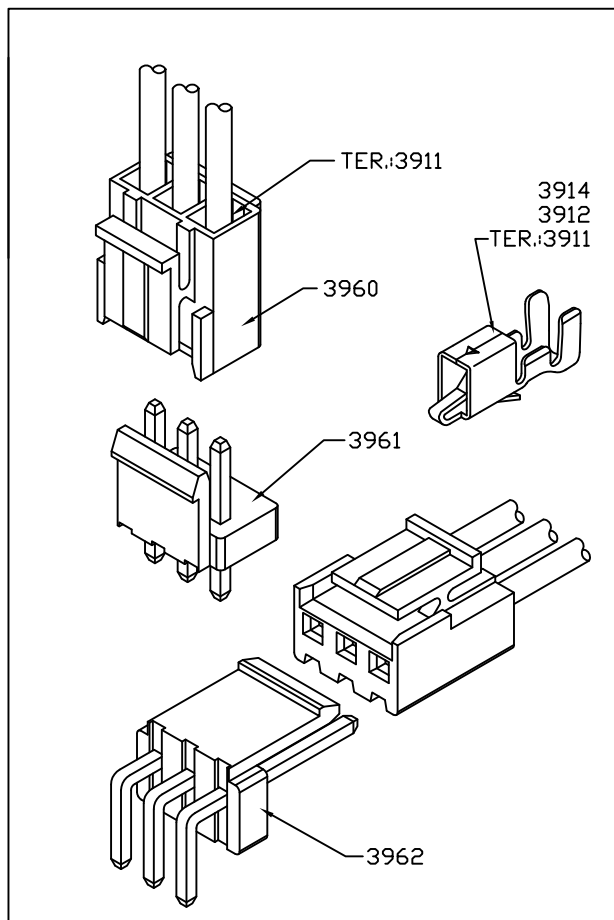
Temperature range: -25°C to $+85^{\circ}\text{C}$
(including temperature rise)

Contact resistance: Initial value/ $10\text{m}\Omega$ Max.
After environmental testing/ $20\text{m}\Omega$ Max.

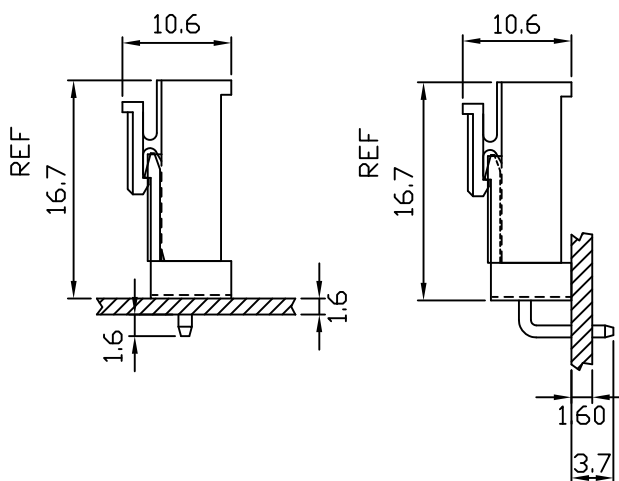
Insulation resistance: $500\text{M}\Omega$ MIN.

Withstanding voltage: 1000V AC/minute

Applicable wire: AWG#18-22



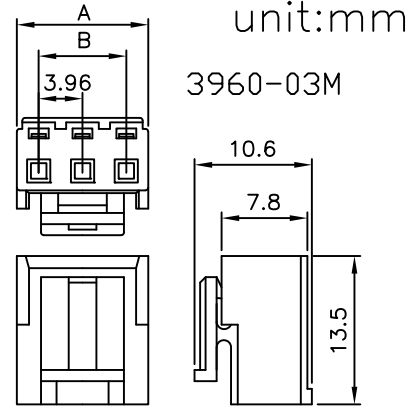
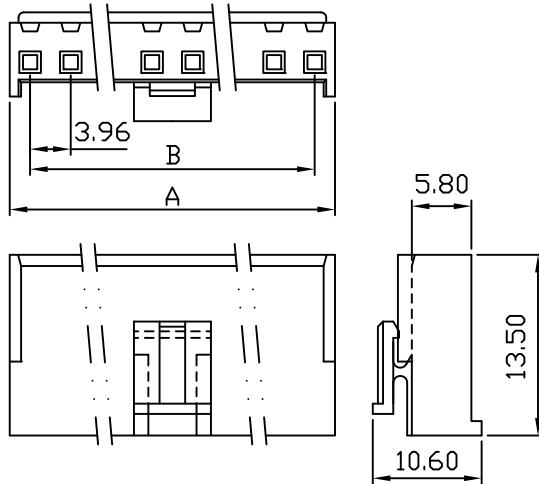
Assembly layout



3960 .156" (3.96mm) PITCH CRIMP HOUSING

Features:

- * MAT'L: NYLON 66 UL94V-0
- * MATES WITH: 3911 3914 SERIES TERMINAL
- * ACCEPTS WITH: 3961 3962 SERIES WAFER
- * ACCEPTS WITH 1.14mm(.045") SQUARE PINS



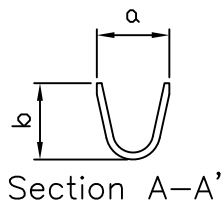
| PART NO. | PART NO. | B | A |
|----------|----------|-------|-------|
| 3960-02 | 3960-02M | 7.86 | 3.96 |
| 3960-03 | 3960-03M | 11.82 | 7.92 |
| 3960-04 | 3960-04M | 15.78 | 11.88 |
| 3960-05 | 3960-05M | 19.74 | 15.84 |
| 3960-06 | 3960-06M | 23.70 | 19.80 |
| 3960-07 | 3960-07M | 27.66 | 23.76 |
| 3960-08 | 3960-08M | 31.62 | 27.72 |
| 3960-09 | 3960-09M | 35.58 | 31.68 |
| 3960-10 | 3960-10M | 39.54 | 35.64 |
| 3960-11 | 3960-11M | 43.50 | 39.60 |
| 3960-12 | 3960-12M | 47.46 | 43.56 |

3911/3914/ .156" (3.96mm) PITCH CRIMP TERMINAL

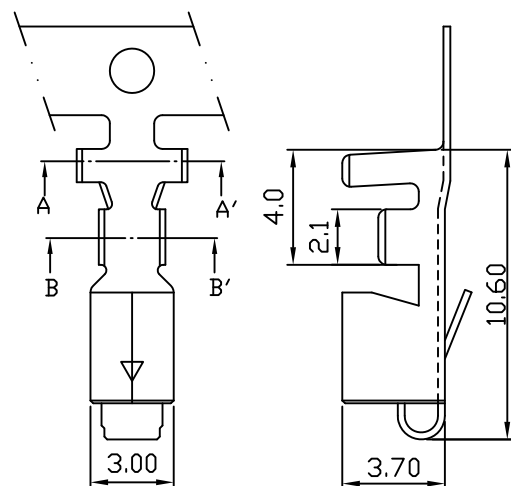
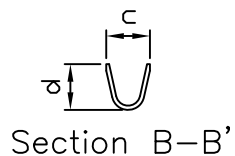
Features:

- * THICKNESS: 0.25mm
- * MAT'L: BRASS OR PHOSPHOR BRONZE TIN PLATED
- * MATES WITH: 3960 SERIES HOUSING
- * ACCEPTS WITH: 3961 3962 SERIES WAFER

unit:mm



| P/N | a | b | c | d |
|------|------|------|------|------|
| 3911 | 4.00 | 3.90 | 2.40 | 2.30 |
| 3912 | 4.00 | 3.90 | 3.00 | 2.80 |
| 3914 | 5.00 | 4.90 | 3.00 | 2.90 |



| PART NO. | WIRE RANGE | INSULATION O.D. | MATERIAL | FINISH | QTY/REEL |
|----------|-------------|-----------------|-----------------------|------------|----------|
| 3911 | AWG #18-#22 | φ3.7~φ1.5mm | BRASS/PHOSPHOR BRONZE | Tin-plated | 4500 |
| 3914 | AWG #16-#18 | φ4.0~φ3.7mm | BRASS/PHOSPHOR BRONZE | Tin-plated | 4000 |

3961 3961-03N2

.156" (3.96mm) PITCH Headers—Straight

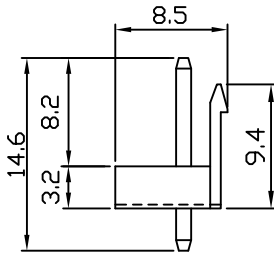
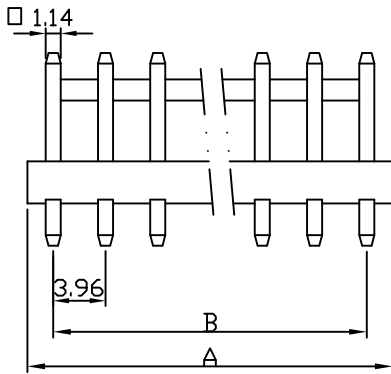
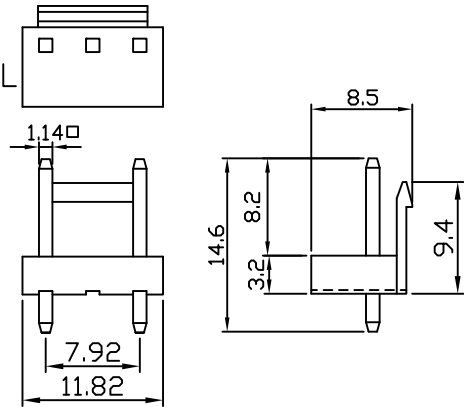
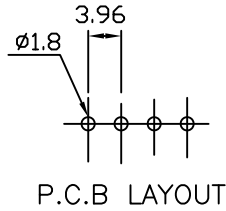
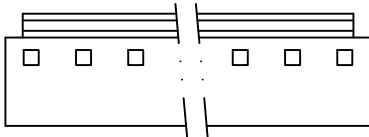
Features:

- * MAT'L: BODY: NYLON 66 UL94V-0
PINS: BRASS TIN PLATED
- * MATES WITH: 3911 3914 SERIES TERMINAL
- * ACCEPTS WITH: 3960 SERIES HOUSING

3961-03N2

unit:mm

3961 SERIES



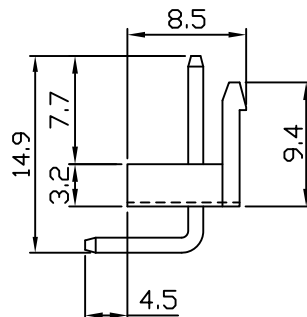
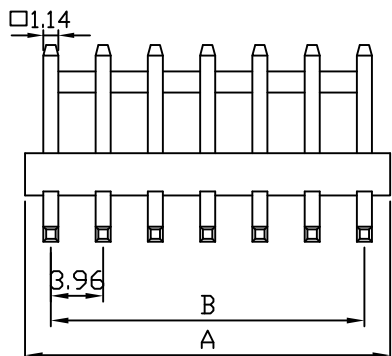
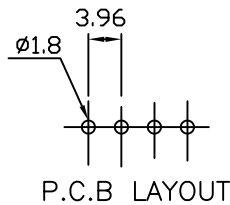
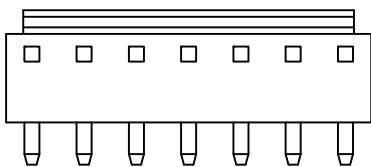
| PART NO. | B | A |
|----------|-------|-------|
| 3961-02 | 3.96 | 7.92 |
| 3961-03 | 7.92 | 11.88 |
| 3961-04 | 11.88 | 15.84 |
| 3961-05 | 15.84 | 19.80 |
| 3961-06 | 19.80 | 23.76 |
| 3961-07 | 23.76 | 27.72 |
| 3961-08 | 27.72 | 31.68 |
| 3961-09 | 31.68 | 35.64 |
| 3961-10 | 35.64 | 39.60 |
| 3961-11 | 39.60 | 43.56 |
| 3961-12 | 43.56 | 47.52 |

3962 .156" (3.96mm) PITCH Headers—Right Angle

Features:

- * MAT'L: BODY: NYLON 66 UL94V-0
PINS: BRASS TIN PLATED
- * MATES WITH: 3911 3914 SERIES TERMINAL
- * ACCEPTS WITH: 3960 SERIES HOUSING

unit:mm



| PART NO. | A | B |
|----------|-------|-------|
| 3962-02 | 7.92 | 3.96 |
| 3962-03 | 11.88 | 7.92 |
| 3962-04 | 15.84 | 11.88 |
| 3962-05 | 19.80 | 15.84 |
| 3962-06 | 23.76 | 19.80 |
| 3962-07 | 27.72 | 23.76 |
| 3962-08 | 31.68 | 27.72 |
| 3962-09 | 35.64 | 31.68 |
| 3962-10 | 39.60 | 35.64 |
| 3962-11 | 43.56 | 39.60 |
| 3962-12 | 47.52 | 43.56 |