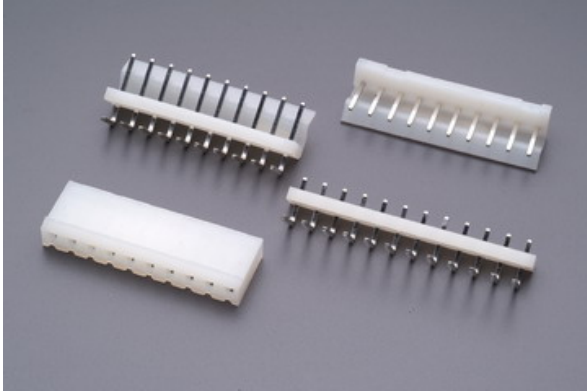


# 5000 SERIES

.197" (5.00mm) PITCH WIRE TO BOARD CONNECTOR



## Specifications

Current rating: 5A AC, DC

Voltage rating: 250V AC, DC

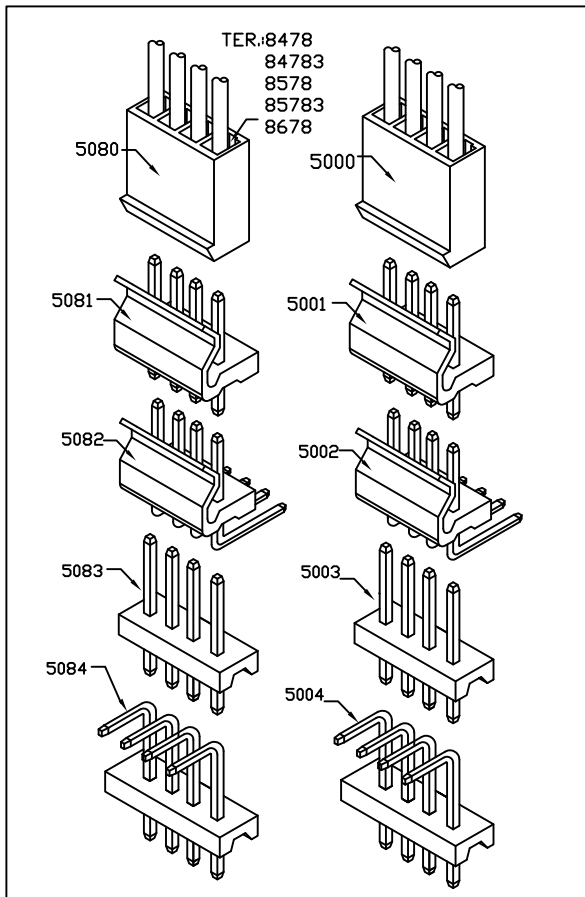
Temperature range: -25°C to +85°C  
(including temperature rise)

Contact resistance: Initial value/10mΩ Max.  
After environmental testing/10mΩ Max.

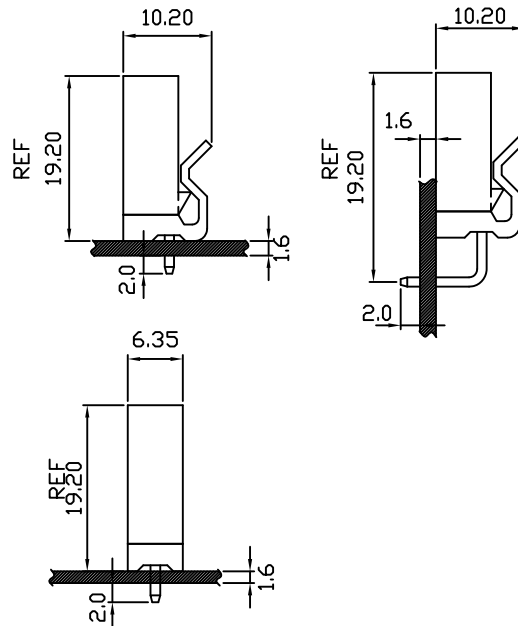
Insulation resistance: 500MΩ MIN.

Withstanding voltage: 1000V AC/minute

Applicable wire: AWG#18-22



## Assembly layout



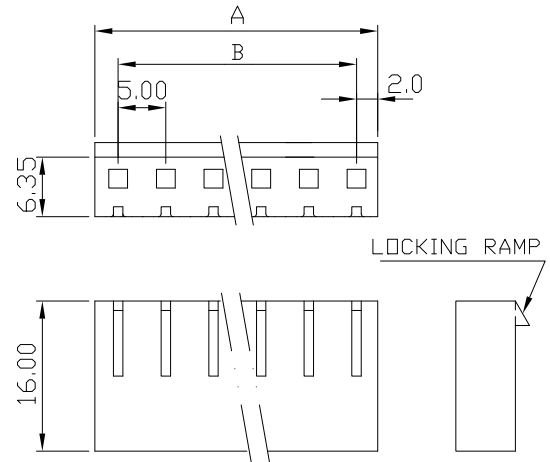
# 5000 .197" (5.0mm) PITCH CRIMP HOUSING

Features:

unit:mm

- \* MAT'L: NYLON 66 UL94V-2
- \* MATES WITH 8478 SERIES TERMINAL
- \* ACCEPTS WITH: 5001 5002 5003 5004 SERIES WAFER

MODEL NO	DIMENSIONS		MODEL NO	DIMENSIONS	
	A	B		A	B
5000-02	10.0	5.00	5000-09	45.0	40.0
5000-03	15.0	10.00	5000-10	50.0	45.0
5000-04	20.0	15.00	5000-11	55.0	50.0
5000-05	25.0	20.00	5000-12	60.0	55.0
5000-06	30.0	25.00	5000-13	65.0	60.0
5000-07	35.0	30.00	5000-14	70.0	65.0
5000-08	40.0	35.00	5000-15	75.0	70.0

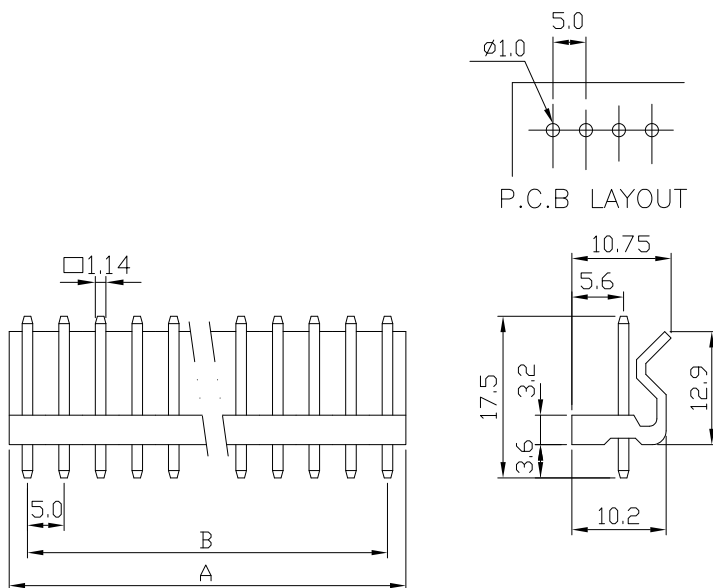


# 5001 .197" (5.0mm) PITCH Headers—Straight

Features:

unit:mm

- \* MAT'L: BODY: NYLON 66 UL94V-2  
PINS: BRASS TIN PLATED
- \* MATES WITH 5000 SERIES HOUSING



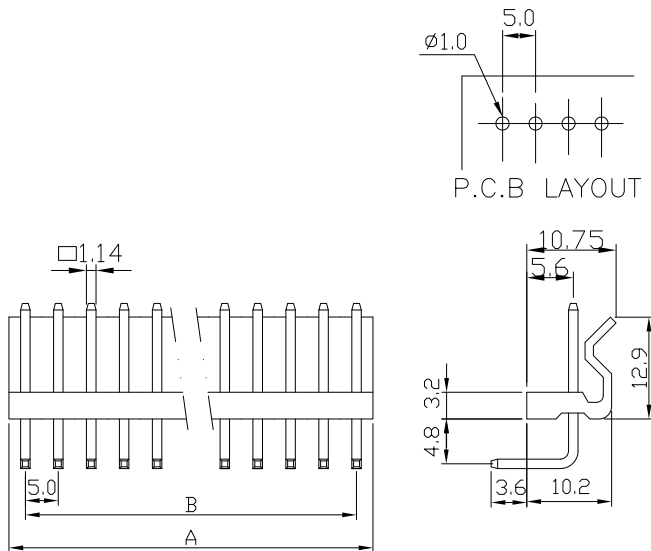
PART NO.	A	B
5001-02	10.0	5.0
5001-03	15.0	10.0
5001-04	20.0	15.0
5001-05	25.0	20.0
5001-06	30.0	25.0
5001-07	35.0	30.0
5001-08	40.0	35.0
5001-09	45.0	40.0
5001-10	50.0	45.0
5001-11	55.0	50.0
5001-12	60.0	55.0
5001-13	65.0	60.0
5001-14	70.0	65.0
5001-15	75.0	70.0

# 5002 .197" (5.0mm) PITCH Headers—Right Angle

Features:

unit:mm

- \* MAT'L: BODY: NYLON 66 UL94V-2  
PINS: BRASS TIN PLATED
- \* MATES WITH 5000 SERIES HOUSING



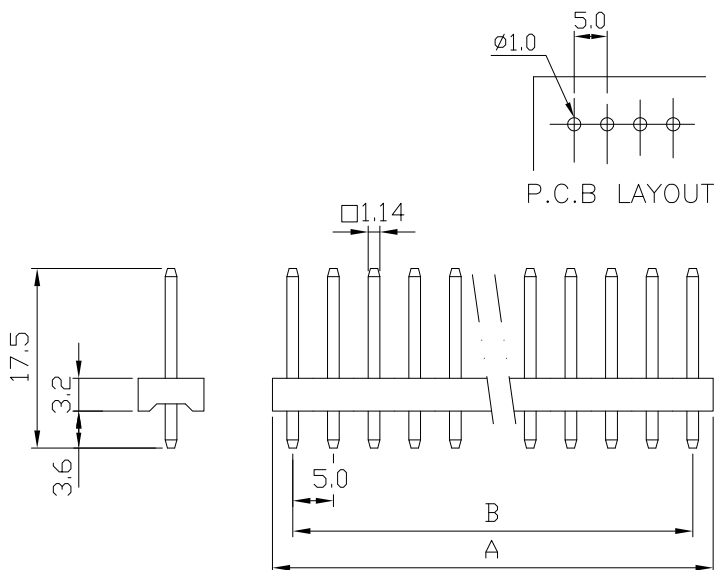
PART NO.	A	B
5002-02	10.0	5.0
5002-03	15.0	10.0
5002-04	20.0	15.0
5002-05	25.0	20.0
5002-06	30.0	25.0
5002-07	35.0	30.0
5002-08	40.0	35.0
5002-09	45.0	40.0
5002-10	50.0	45.0
5002-11	55.0	50.0
5002-12	60.0	55.0
5002-13	65.0	60.0
5002-14	70.0	65.0
5002-15	75.0	70.0

# 5003 .197" (5.0mm) Headers—Straight

Features:

unit:mm

- \* MAT'L: BODY: NYLON 66 UL94V-2  
PINS: BRASS TIN PLATED
- \* MATES WITH 5000 SERIES HOUSING



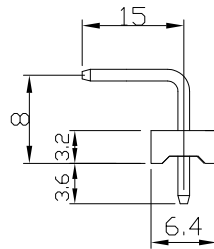
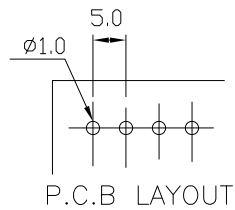
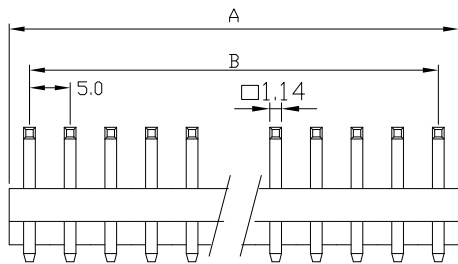
PART NO.	A	B
5003-02	10.0	5.0
5003-03	15.0	10.0
5003-04	20.0	15.0
5003-05	25.0	20.0
5003-06	30.0	25.0
5003-07	35.0	30.0
5003-08	40.0	35.0
5003-09	45.0	40.0
5003-10	50.0	45.0
5003-11	55.0	50.0
5003-12	60.0	55.0
5003-13	65.0	60.0
5003-14	70.0	65.0
5003-15	75.0	70.0

# 5004 .197" (5.0mm) PITCH Headers—Right Angle

Features:

unit:mm

- \* MAT'L: BODY: NYLON 66 UL94V-2  
PINS: BRASS TIN PLATED
- \* MATES WITH 5000 SERIES HOUSING



PART NO.	A	B
5004-02	10.0	5.0
5004-03	15.0	10.0
5004-04	20.0	15.0
5004-05	25.0	20.0
5004-06	30.0	25.0
5004-07	35.0	30.0
5004-08	40.0	35.0
5004-09	45.0	40.0
5004-10	50.0	45.0
5004-11	55.0	50.0
5004-12	60.0	55.0
5004-13	65.0	60.0
5004-14	70.0	65.0
5004-15	75.0	70.0