

1080 SERIES

.394" (10mm)x.315" (8mm) PITCH WIRE TO BOARD CONNECTOR



Specifications

Current rating: 5A AC,DC

Voltage rating: 250V AC,DC

Temperature range: -25°C to +85°C
(including temperature rise)

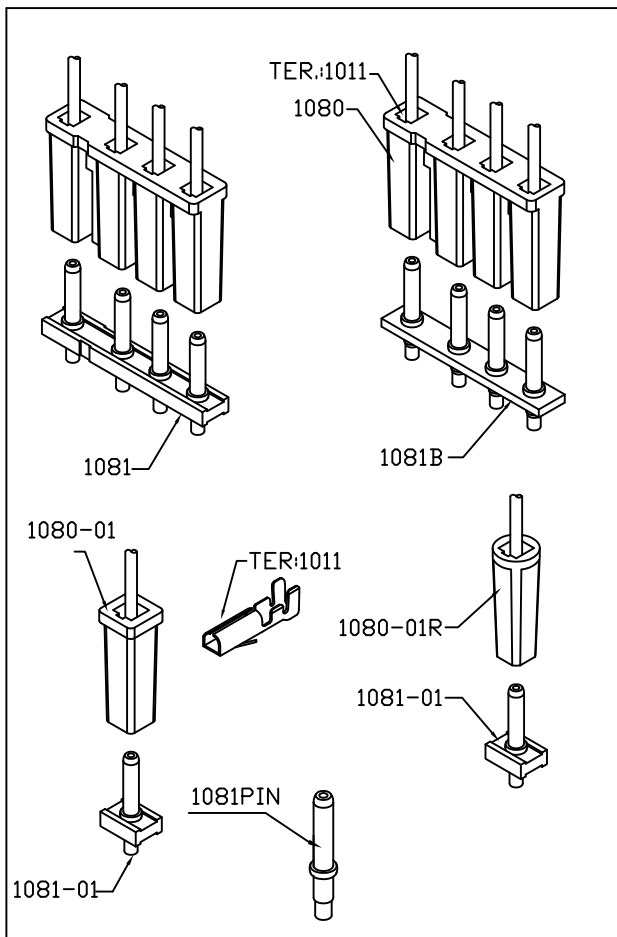
Contact resistance: Initial value/10mΩ Max.

After environmental testing/20mΩ Max.

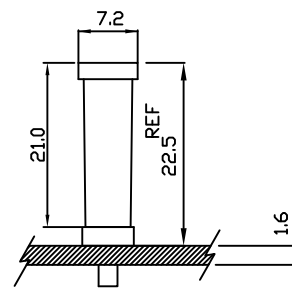
Insulation resistance: 1000MΩ MIN.

Withstanding voltage: 1500V AC/minute

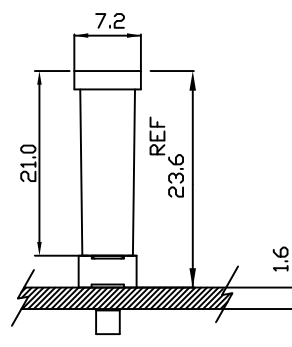
Applicable wire: AWG#18-22



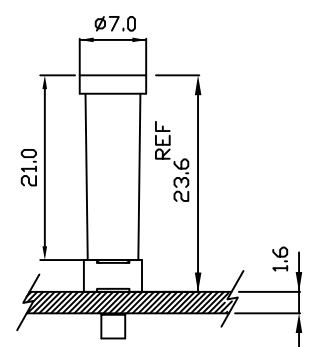
Assembly layout



1080 & 1081B



1080 & 1081



1080R & 1081

1080-01L 1080-01R SERIES

WIRE TO BOARD CONNECTOR



Specifications

Current rating: 5A AC,DC

Voltage rating: 250V AC,DC

Temperature range: -25°C to +85°C

(including temperature rise)

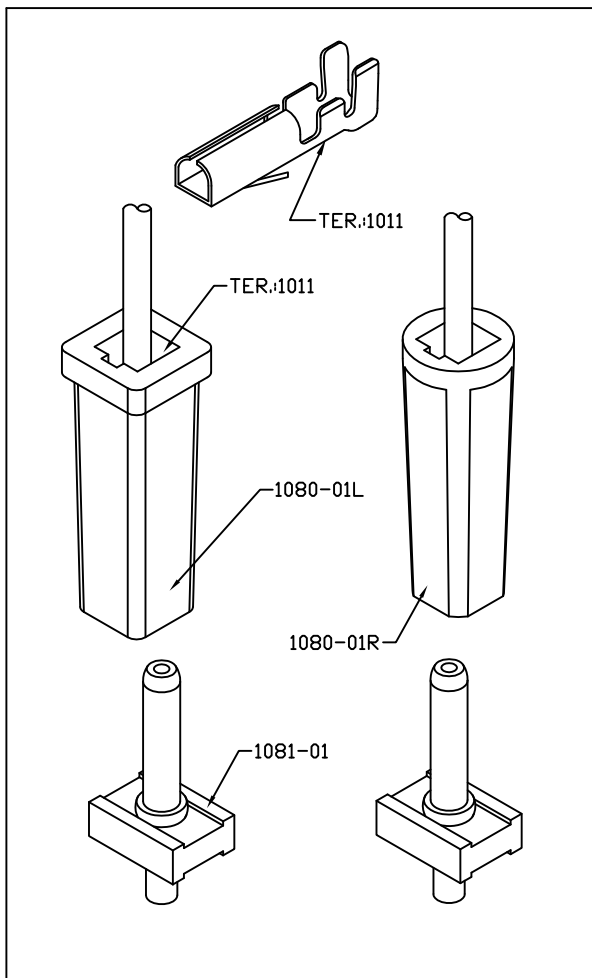
Contact resistance: Initial value/10mΩ Max.

After environmental testing/20mΩ Max.

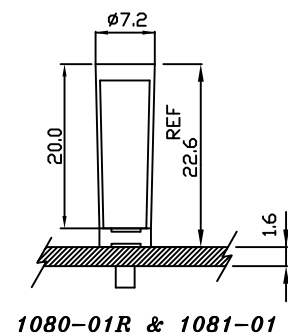
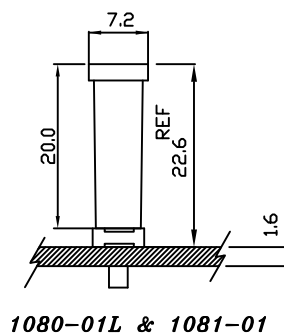
Insulation resistance: 1000MΩ MIN.

Withstanding voltage: 1500V AC/minute

Applicable wire: AWG#18-22



Assembly layout

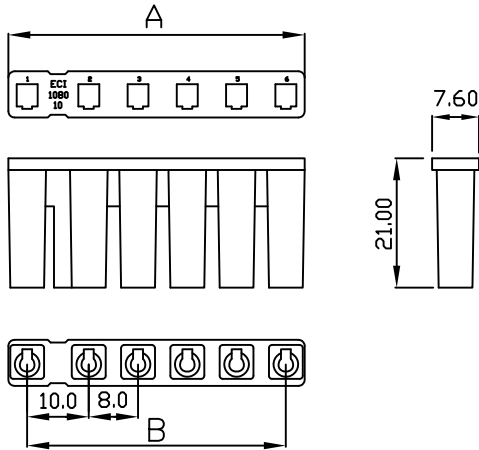


1080 .394" (10mm)x.315" (8mm) PITCH CRIMP HOUSING

Features:

unit:mm

- * MAT'L: NORYL UL 94V-0
- * MATES 1011 1013 SERIES TERMINAL
- * ACCEPTS WITH 1081 SERIES WAFER



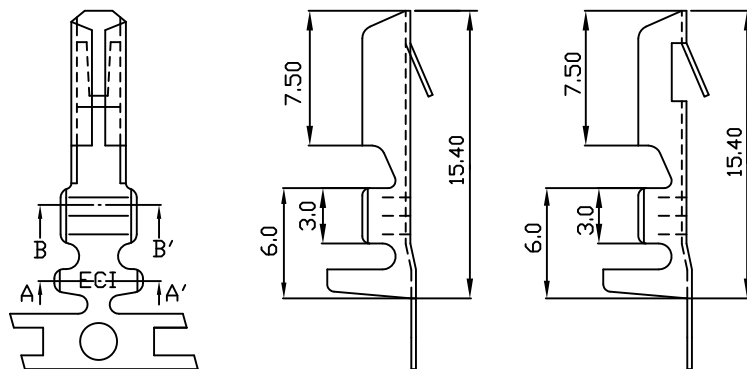
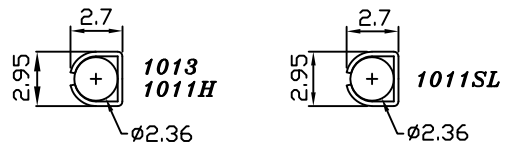
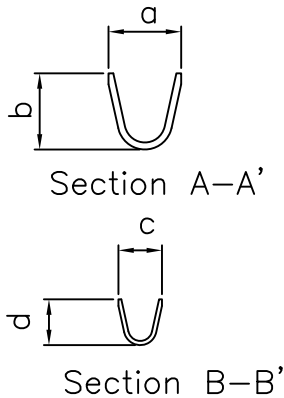
PART NO.	A	B
1080-01	7.2	
1080-02	16.0	10.0
1080-03	24.0	18.0
1080-04	32.0	26.0
1080-05	40.0	34.0
1080-06	48.0	42.0

1011H 1011SL 1013 .394" (10mm)x.315" (8mm) PITCH CRIMP TERMINAL

Features:

unit:mm

- * THICKNESS: 0.25mm
- * MAT'L: BRASS TIN PLATED
- * MATES WITH: 1080 SERIES HOUSING



PART NO.	a	b	c	d
1011H 1011SL	3.8	3.5	2.8	2.5
1013	4.6	4.0	2.4	2.7

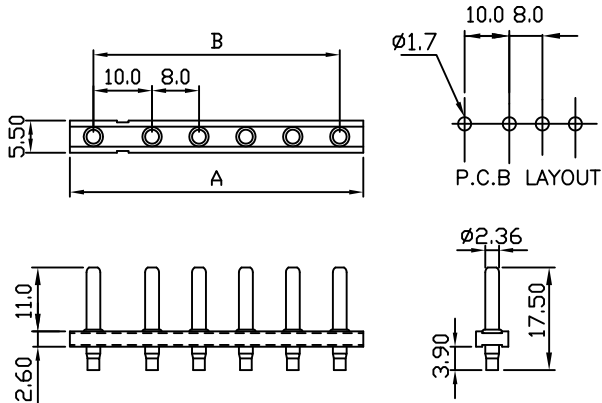
PART NO.	WIRE RANGE	INSULATION O.D.	MATERIAL	FINISH	QTY/REEL
1011H 1011SL	AWG#18-22	ø2.54 mm MAX	BRASS	Tin-plated	7,000
1013	AWG#18-22	ø2.80 mm MAX	BRASS	Tin-plated	7,000

1081 1081B .394" (10mm)x.315" (8mm) PITCH WAFER

1081

Features:

- * MATES: BODY: NORYL 66 UL94V-0
PINS: BRASS TIN PLATED
- * MATES WITH 1080 SERIES HOUSING
- * ACCEPTS WITH: 1011 1013 SERIES TERMINAL

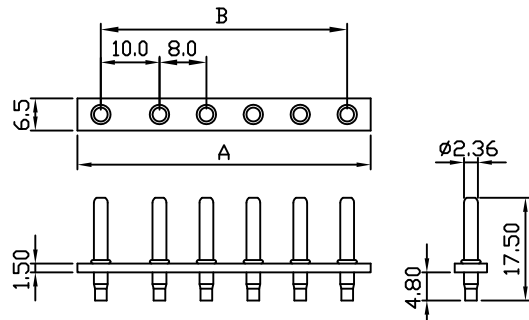


PART NO.	A	B
1081-01	6.5	
1081-02	18.0	10.0
1081-03	26.0	18.0
1081-04	34.0	26.0
1081-05	42.0	34.0
1081-06	50.0	42.0

1081B

Features:

- * MAT'L: BAKELITE
- * MATES WITH: 1080 SERIES HOUSING
- * ACCEPTS WITH: 1011 1013 SERIES TERMINAL



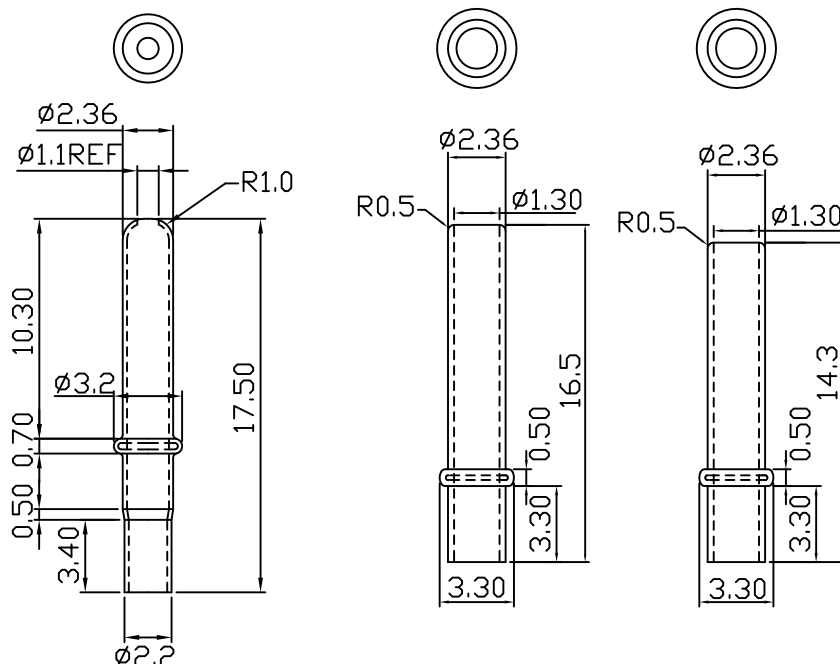
PART NO.	A	B
1081B-01	8.0	
1081B-02	18.0	10.0
1081B-03	26.0	18.0
1081B-04	34.0	26.0
1081B-05	42.0	34.0
1081B-06	50.0	42.0

1081-01 PIN

1081-01 PIN

Features:

- * THICKNESS: 0.3mm
- * MAT'L: BRASS TIN PLATED



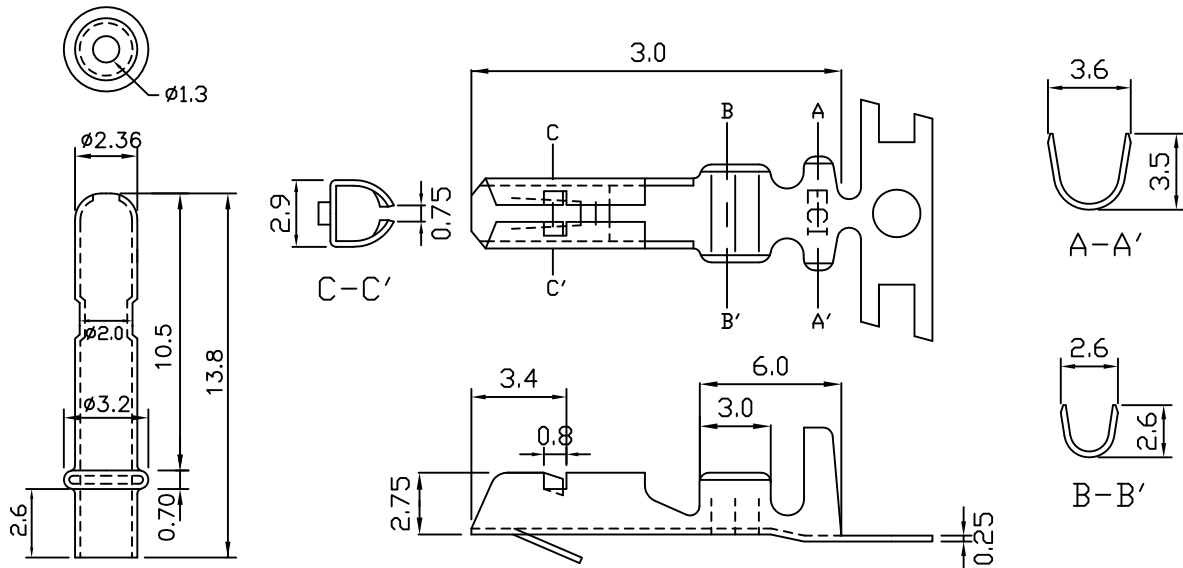
unit:mm

1011D-PH CRIMP TERMINAL

Features:

unit:mm

- * THICKNESS: 0.25mm
- * MATES: PHOSPHOR BRONZE TIN PLATED
- * MATES WITH: 1080 SERIES HOUSING
- * ACCEPTS WITH: 1081D PIN



1081D

PART NO.	WIRE RANGE	INSULATION O.D.	MATERIAL	FINISH	QTY/REEL
1011D-PH	AWG#18-22	ø2.54 mm MAX	Phosphor-Bronze	Tin-plated	7,000

1080-01L 1080-01R CRIMP HOUSING

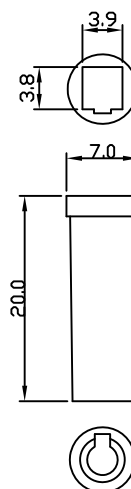
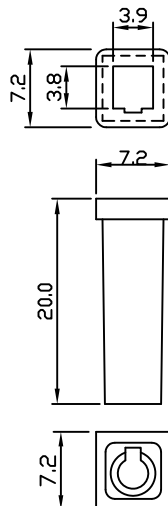
Features:

unit:mm

- * MAT'L: NORYL UL94V-0 BLACK COLOR OR GRAY COLOR
- * MATES: 1011 1013 SERIES TERMINAL
- * ACCEPTS: 1081 SERIES WAFER

1080-01L SERIES

1080-01R SERIES

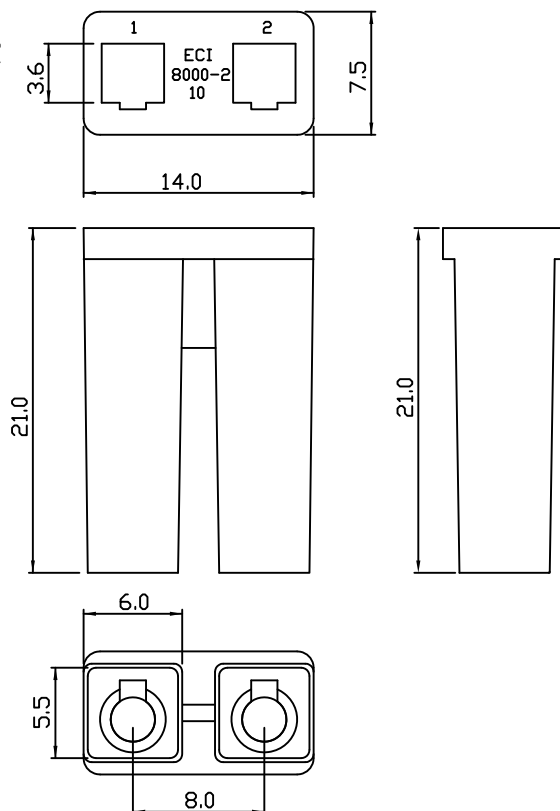


8000-02 .315" (8.0mm) PITCH CRIMP HOUSING

Features:

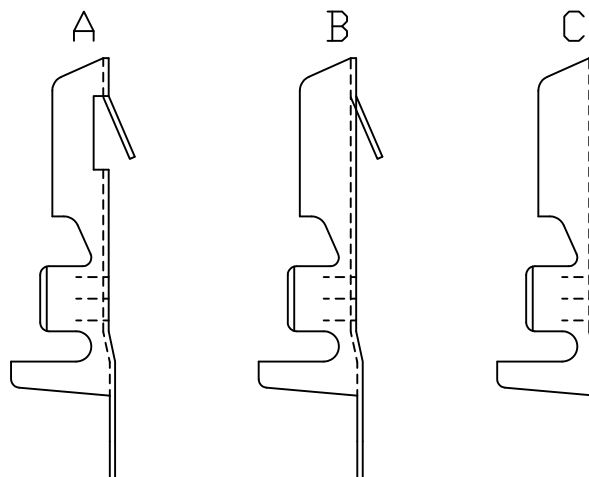
unit:mm

- * MAT'L: NORYL UL94V-0 BLACK COLOR
OR GRAY COLOR
- * MATES: 1011 1013 SERIES TERMINAL
- * ACCEPTS: 1081 SERIES WAFER



1011 CRIMP TERMINAL

unit:mm



PART NO.	MATEEIAL	FINISH	TYPE
1011	BRASS	TIN-PLATED	BC
1011P	PHOSPHOR BRONZE	TIN-PLATED	BC
1011H	BRASS	TIN-PLATED	B
1011PH	PHOSPHOR BRONZE	TIN-PLATED	B
1011SL	BRASS	TIN-PLATED	A
1011NSL	BRASS	NICKEL-PLATED	A
1011PNSL	PHOSPHOR BRONZE	NICKEL-PLATED	A