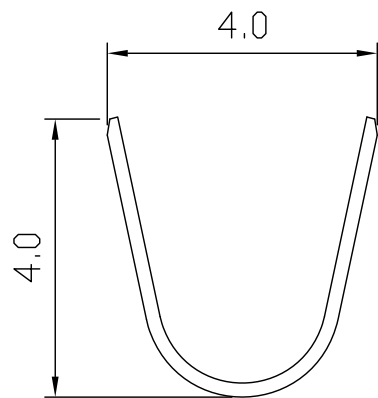


4001T .157" (4.0mm) PITCH CRIMP TERMINAL

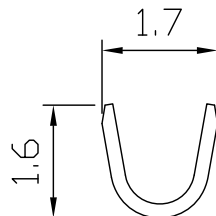
Features:

unit:mm

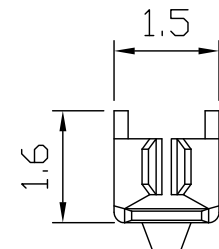
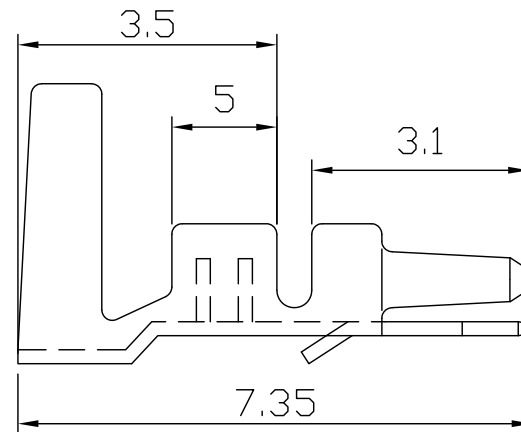
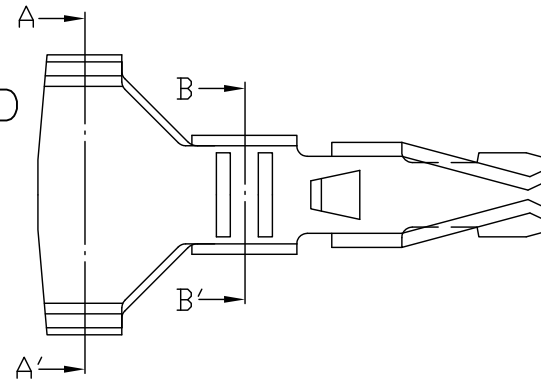
- * THICKNESS:0.2mm
- * MAT'L: PHOSPHOR BRONZE TIN PLATED
- * MATES WITH: 4001H SERIES HOUSING



Section A-A'



Section B-B'



PART/NO.	WIRE RANGE	INSULATION O.D	MATERIAL	FINISH	QTY/REEL
4001T	AWG#22-28	ø1.7 mm MAX	PHOSPHOR BRONZE	Tin-Plated	5,000