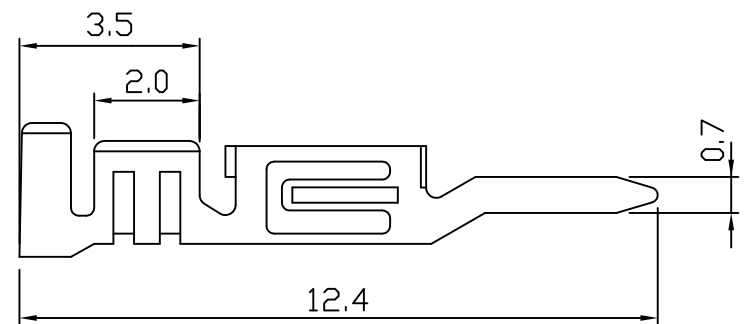
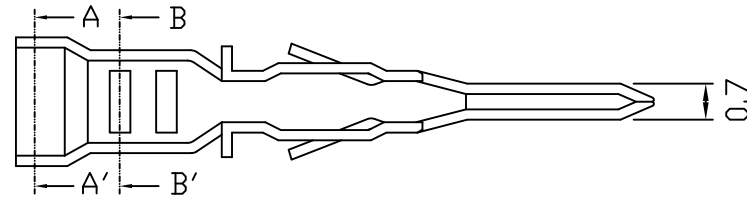
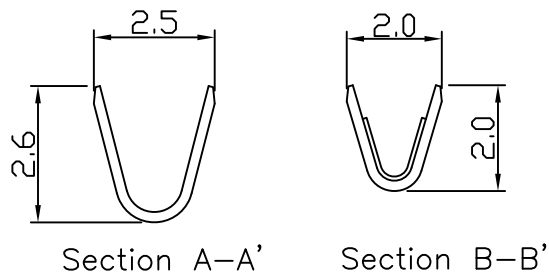


3015 .118" (3.0mm) CRIMP TERMINAL

Features:

unit:mm

- * THICKNESS: 0.2mm
- * MATES WITH: 3015H SERIES HOUSING
- * ACCEPTS WITH: 3016T TERMINAL



PART NO.	WIRE RANGE	MATERIAL	FINISH	QTY/REEL
3015	AWG#20-24	Phosphor bronze	Tin-plated	6,000 PCS