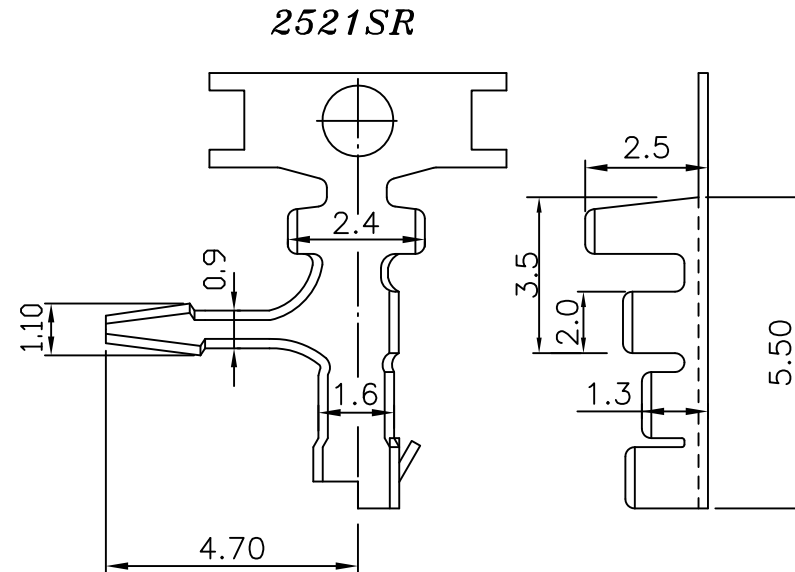
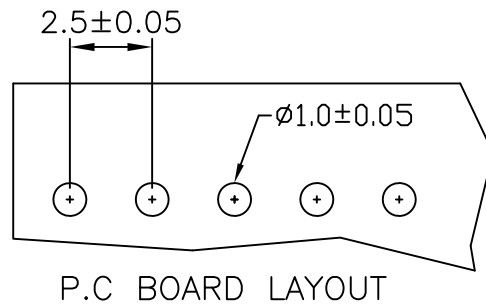


2521SR .098" (2.5mm) PITCH CRIMP TERMINAL

unit:mm

Features:

- * THICKNESS: 0.2mm
- * MAT'L: BRASS TIN PLATED
- * USE WITH 1.6mm OR 1.2mm THICK P.C BOARD
- * MATES WITH: 2520R SERIES HOUSING
- * TERMINAL SOLDER DIRECTLY TO P.C BOARD



PART NO.	WIRE RANGE	INSULATION O.D.	MATERIAL	FINISH	QTY/REEL
2521SR	AWG#22-#28	Ø1.9mm max	BRASS	Tin-plated	10,000