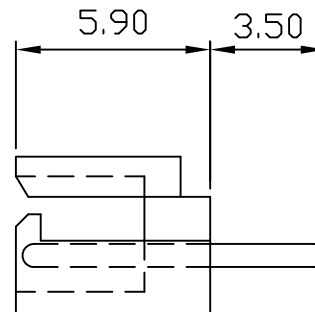
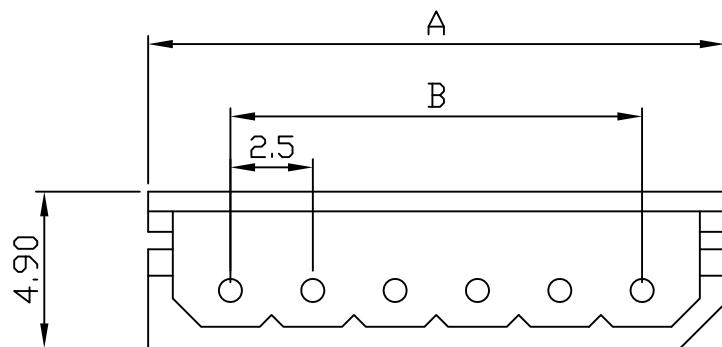
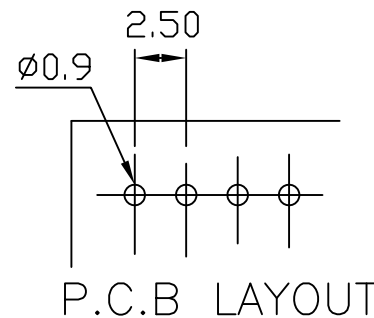


# 2580PS .098" (2.50mm) PITCH Headers—Straight

unit:mm

## Features:

- \* MAT'L: BODY: NYLON 66 UL 94V-0  
PINS:  $\phi 0.7$ mm ROUND PIN  
BRASS TIN PLATED
- \* MATES WITH: 2580 SERIES TERMINAL
- \* ACCEPTS WITH: 2580H SERIES HOUSING



PART NO.	A	B
2580PS-02	7.5	2.5
2580PS-03	10.0	5.0
2580PS-04	12.5	7.5
2580PS-05	15.0	10.0
2580PS-06	17.5	12.5
2580PS-07	20.0	15.0
2580PS-08	22.5	17.5
2580PS-09	25.0	20.0
2580PS-10	27.5	22.5
2580PS-11	30.0	25.0
2580PS-12	32.5	27.5
2580PS-13	35.0	30.0
2580PS-14	37.5	32.5
2580PS-15	40.0	35.0
2580PS-16	42.5	37.5
2580PS-17	45.0	40.0
2580PS-18	47.5	42.5
2580PS-19	50.0	45.0
2580PS-20	52.5	47.5