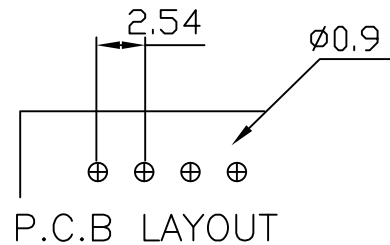


2541 .100" (2.54mm) PITCH Headers—Right Angle

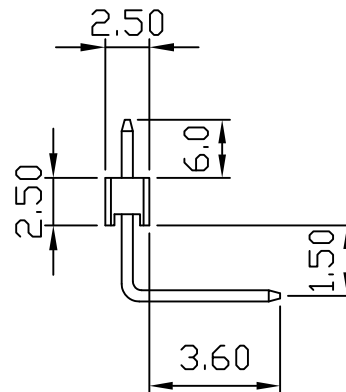
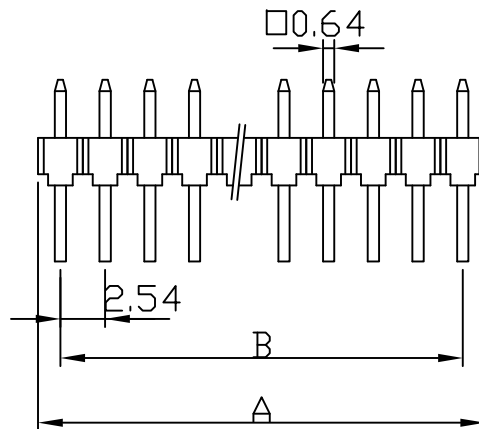
Features:

unit:mm

- * MAT'L: BODY: PBT 94V-0
PINS: BRASS GOLD PLATED
- * MATES WITH: 2551 2563 2564 SERIES TERMINAL
- * ACCEPTS WITH: 2550 2561H & 2562H SERIES HOUSING



2541 SERIES



PART NO.	DIM"A"	DIM"B"
2541-02	5.08	2.54
2541-03	7.62	5.08
2541-04	10.16	7.62
2541-05	12.70	10.16
2541-06	15.24	12.70
2541-07	17.78	15.24
2541-08	20.32	17.78
2541-09	22.86	20.32
2541-10	25.40	22.86
2541-11	27.94	25.40
2541-12	30.48	27.94
2541-13	33.02	30.48
2541-14	35.56	33.02
2541-15	38.10	35.56
2541-16	40.64	38.10
2541-17	43.18	40.64
2541-18	45.72	43.18
2541-19	48.26	45.72
2541-20	50.80	48.26

PART NO.	DIM"A"	DIM"B"
2541-21	53.34	50.80
2541-22	55.88	53.34
2541-23	58.42	55.88
2541-24	60.96	58.42
2541-25	63.50	60.96
2541-26	66.04	63.50
2541-27	68.58	66.04
2541-28	71.12	68.58
2541-29	73.66	71.12
2541-30	76.20	73.66
2541-31	78.74	76.20
2541-32	81.28	78.74
2541-33	83.82	81.28
2541-34	86.36	83.82
2541-35	88.90	86.36
2541-36	91.44	88.90
2541-37	93.98	91.44
2541-38	96.52	93.98
2541-39	99.06	96.52
2541-40	101.60	99.06