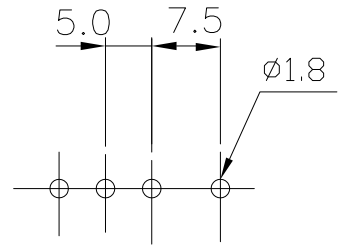


# 7501 .295" (7.5mm) X .197" (5.0mm) PITCH Headers-Straight

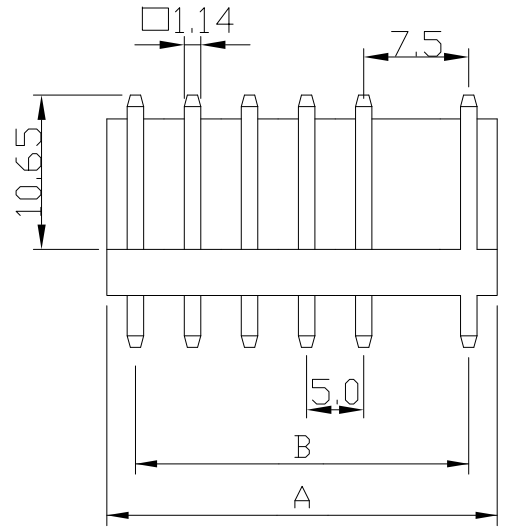
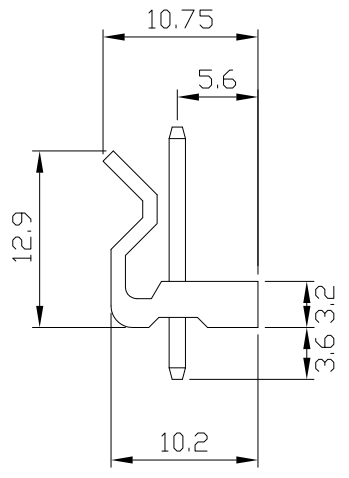
unit:mm

## Features:

- \* MAT'L: BODY: NYLON 66 UL94V-2  
PINS: BRASS TIN PLATED
- \* MATES WITH 7500 SERIES HOUSING



P.C.B LAYOUT



PART NO.	A	B
7501-02	12.5	7.5
7501-03	17.5	12.5
7501-04	22.5	17.5
7501-05	27.5	22.5
7501-06	32.5	27.5
7501-07	37.5	32.5
7501-08	42.5	37.5
7501-09	47.5	42.5
7501-10	52.5	47.5