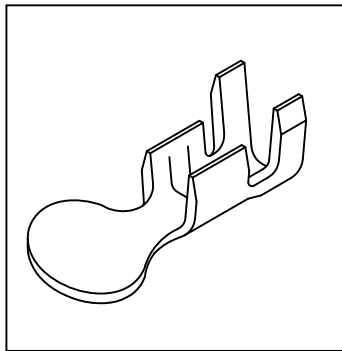
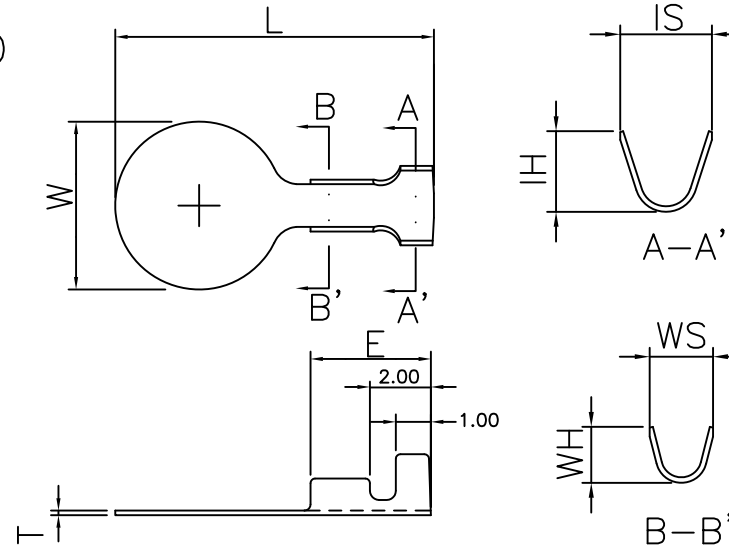


RING TONGUE TERMINAL

unit:mm



E450



PART/NO.	W	E	L	D	T	IS	IH	WS	WH	MT'L/FINISH	W/R	INS.O.D.
E450	6.5	5.0	10.5	5.5	0.15	2.6	2.1	1.8	1.5	DN	#26-30	1.3-0.9