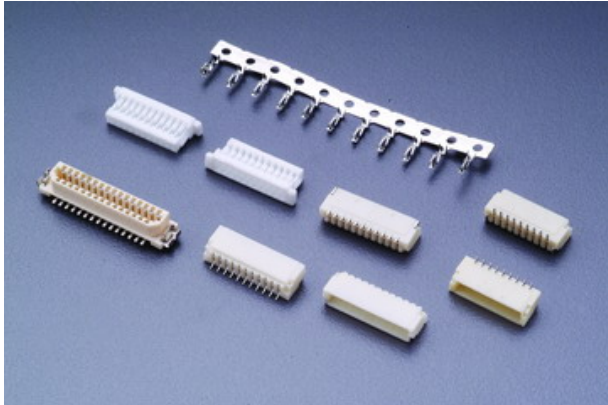


E001H SERIES

.039" (1.0mm) PITCH WIRE TO BOARD CONNECTOR



Specifications

Current rating: 1A AC,DC

Voltage rating: 50V AC,DC

Temperature range: -25°C to +85°C
(including temperature rise)

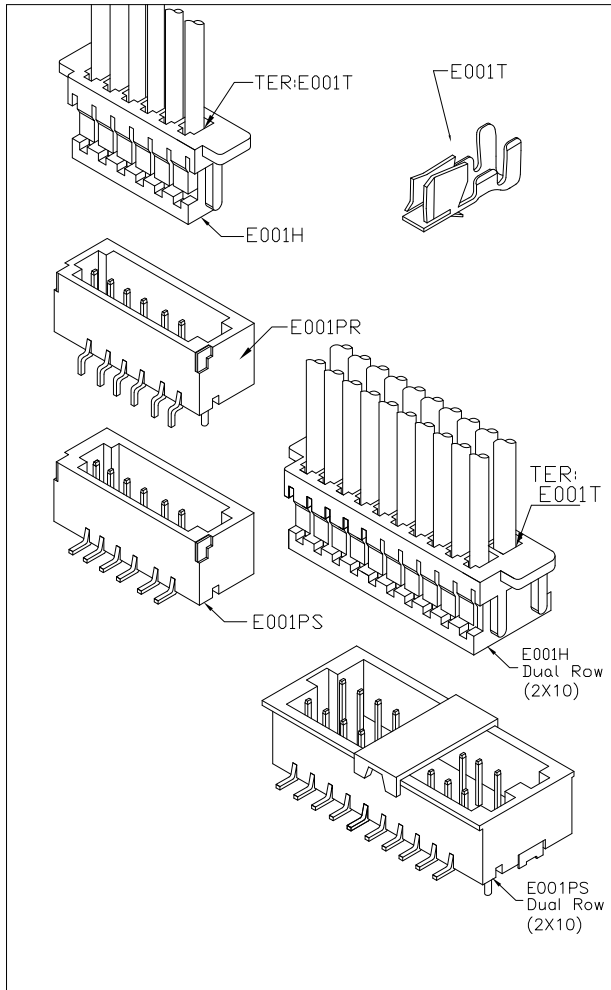
Contact resistance: Initial value/20 mΩ Max.

After environmental testing/20mΩ Max.

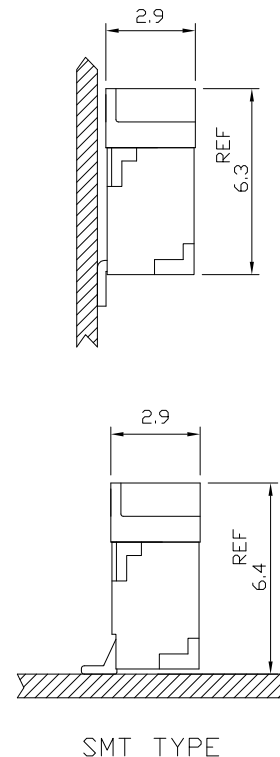
Insulation resistance: 100MΩ MIN.

Withstanding voltage: 500V AC/minute

Applicable wire: AWG#28~#32



Assembly layout

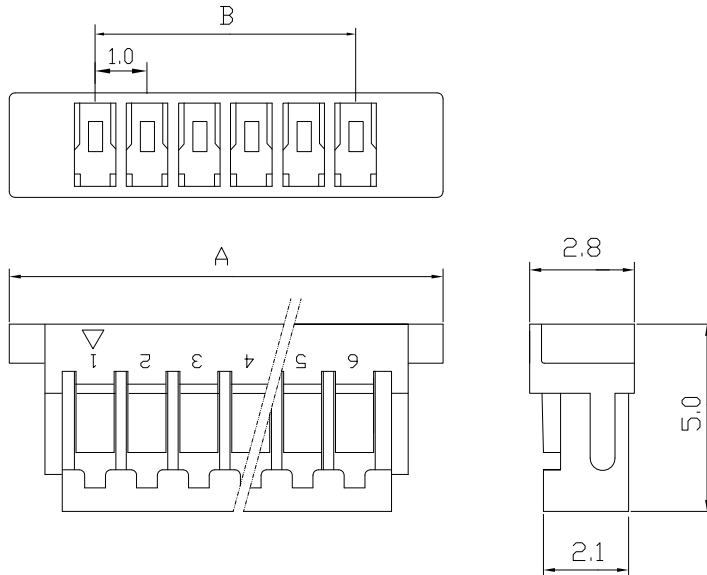


E001H (Single Row) .039" (1.0mm) PITCH CRIMP HOUSING

Features:

unit:mm

- * MAT'L: PBT UL94V-0
- * MATES WITH: E001T SERIES TERMINAL
- * ACCEPTS WITH: E001PS & E001PR SERIES WAFER



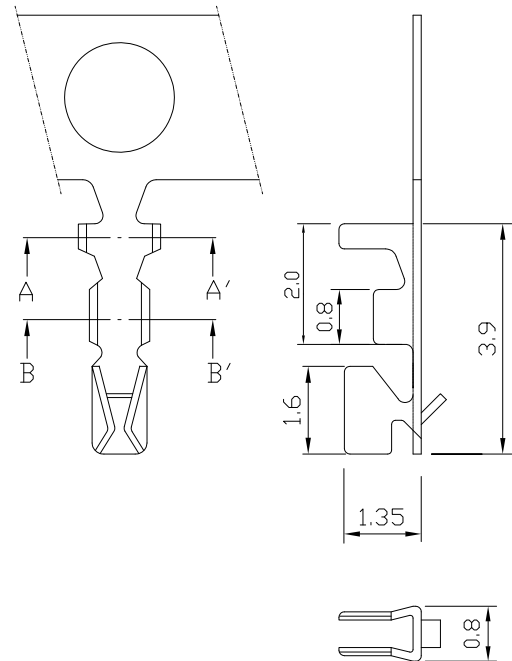
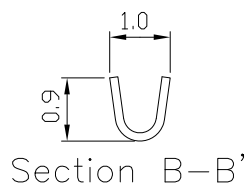
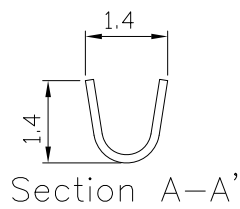
PART NO.	A	B
E001H-1X02	5.0	1.0
E001H-1X03	6.0	2.0
E001H-1X04	7.0	3.0
E001H-1X05	8.0	4.0
E001H-1X06	9.0	5.0
E001H-1X07	10.0	6.0
E001H-1X08	11.0	7.0
E001H-1X09	12.0	8.0
E001H-1X10	13.0	9.0
E001H-1X11	14.0	10.0
E001H-1X12	15.0	11.0
E001H-1X13	16.0	12.0
E001H-1X14	17.0	13.0
E001H-1X15	18.0	14.0
E001H-1X16	19.0	15.0
E001H-1X17	20.0	16.0
E001H-1X18	21.0	17.0
E001H-1X19	22.0	18.0
E001H-1X20	23.0	19.0

E001T .039" (1.0mm) PITCH CRIMP TERMINAL

Features:

unit:mm

- * THICKNESS: 0.12mm
- * MAT'L: PHOSPHOR BRONZE TIN PLATED
- * MATES WITH: E001H SERIES HOUSING



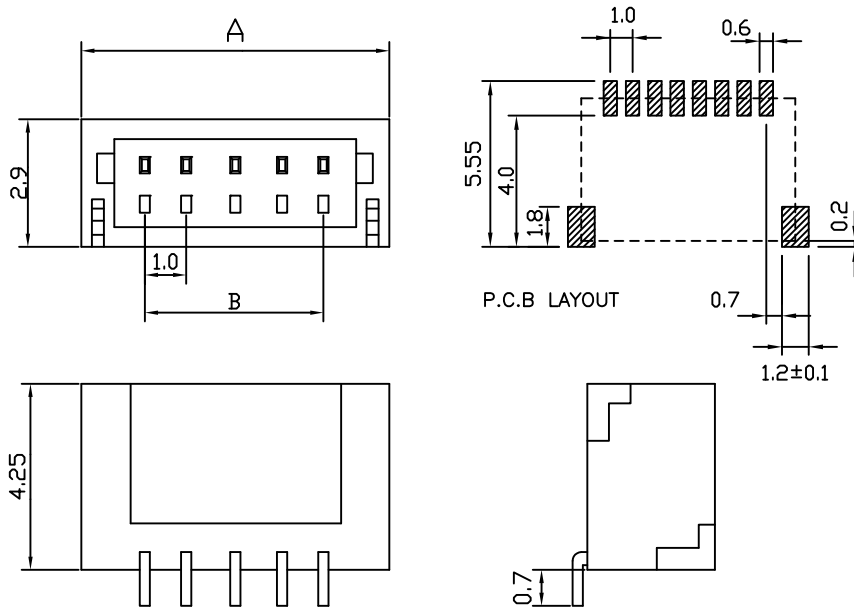
PART NO.	WIRE RANGE	INSULATION O.D.	MATERIAL	FINISH	QTY/REEL
E001H	AWG#28-#32	ø0.75mm MAX	PHOSPHOR BRONZE	Tin-plated	15000

E001PR .039" (1.0mm) PITCH Headers—Right Angle

Features:

unit:mm

- * MAT'L: NYLON 6T UL94V-0
- * MATES WITH: E001H SERIES HOUSING
- * ACCEPTS WITH: E001T SERIES TERMINAL



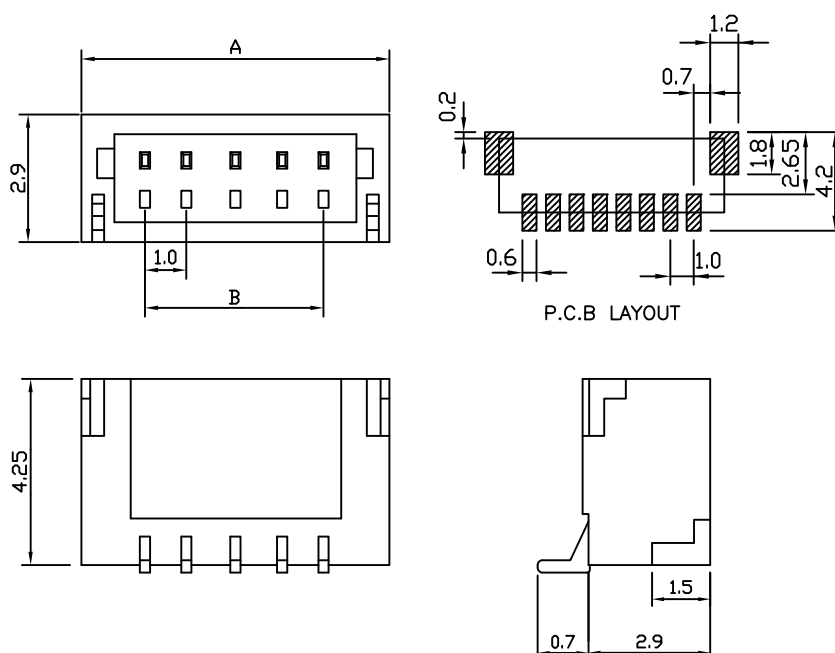
PART NO.	A	B
E001PR-02	4.0	1.0
E001PR-03	5.0	2.0
E001PR-04	6.0	3.0
E001PR-05	7.0	4.0
E001PR-06	8.0	5.0
E001PR-07	9.0	6.0
E001PR-08	10.0	7.0
E001PR-09	11.0	8.0
E001PR-10	12.0	9.0
E001PR-11	13.0	10.0
E001PR-12	14.0	11.0
E001PR-13	15.0	12.0
E001PR-14	16.0	13.0
E001PR-15	17.0	14.0

E001PS .039" (1.0mm) PITCH Headers—Straight

Features:

unit:mm

- * MAT'L: NYLON 6T UL94V-0
- * MATES WITH: E001H SERIES HOUSING
- * ACCEPTS WITH: E001T SERIES TERMINAL



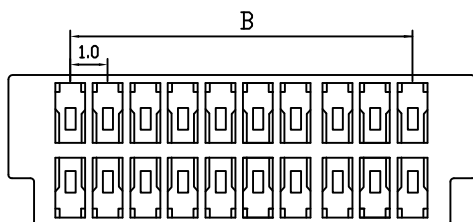
PART NO.	A	B
E001PS-02	4.0	1.0
E001PS-03	5.0	2.0
E001PS-04	6.0	3.0
E001PS-05	7.0	4.0
E001PS-06	8.0	5.0
E001PS-07	9.0	6.0
E001PS-08	10.0	7.0
E001PS-09	11.0	8.0
E001PS-10	12.0	9.0
E001PS-11	13.0	10.0
E001PS-12	14.0	11.0
E001PS-13	15.0	12.0
E001PS-14	16.0	13.0
E001PS-15	17.0	14.0

E001H (Dual Row) .039" (1.0mm) PITCH CRIMP HOUSING

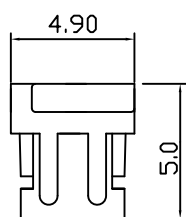
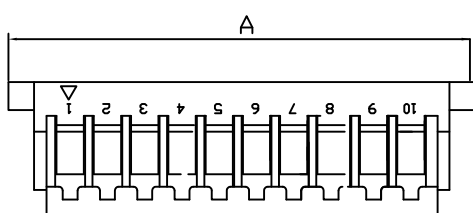
Features:

unit:mm

- * MAT'L: PBT UL 94V-0
- * MATES WITH: E001T SERIES TERMINAL
- * ACCEPTS WITH: E001PS (Dual Row) SERIES WAFER



PART NO.	A	B
E001H-2X10	13.0	9.0
E001H-2X15	18.0	14.0
E001H-2X20	23.0	19.0
E001H-2X25	28.0	24.0

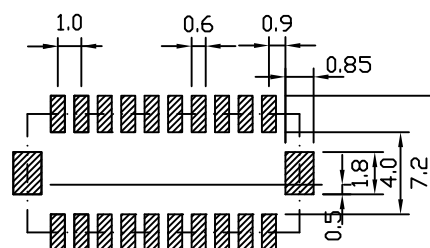
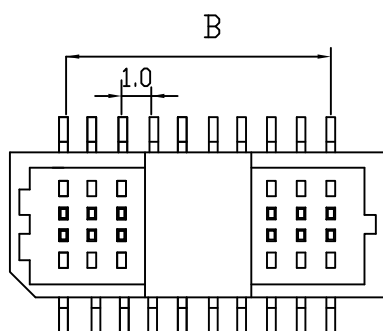


E001PS (Dual Row) .039" (1.0mm) PITCH Headers—Straight

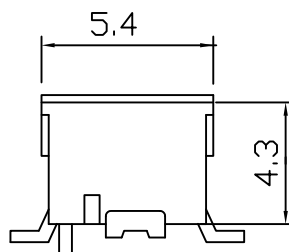
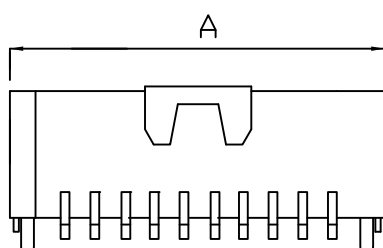
unit:mm

Features:

- * MAT'L: NYLON 6T UL94V-0
- * MATES WITH: E001T SERIES TERMINAL
- * ACCEPTS WITH: E001H SERIES HOUSING



P.C.B LAYOUT



PART NO.	A	B
E001PS-2X10	12.3	9.0
E001PS-2X15	17.3	14.0
E001PS-2X20	22.3	19.0
E001PS-2X25	27.3	24.0